



ComColorExpress IS1000C / IS950C

Setup Guide

 **CAUTION**

To ensure safety precautions, be sure to read this manual before using the product.
After reading this manual, keep it in handy for future reference.

Preface

Thank you for purchasing the ComColorExpress IS1000C / IS950C.

This product is a controller with a high-performance interpreter that supports networks and PostScript®3. This unit allows various functions such as data output and printer monitoring to be used from Windows and Macintosh computers.

Before using this unit, please read this document. After reading this document, keep it in handy for future reference.

The user is cautioned that unauthorized changes or modifications not approved could void the user's authority to operate the equipment.

This equipment has been tested and found to comply with the limits for a Class B digital device, pursuant to part 15 of the FCC Rules. These limits are designed to provide reasonable protection against harmful interference in a residential installation. This equipment generates, uses and can radiate radio frequency energy and, if not installed and used in accordance with the instructions, may cause harmful interference to radio communications. However, there is no guarantee that interference will not occur in a particular installation. If this equipment does cause harmful interference to radio or television reception, which can be determined by turning the equipment off and on, the user is encouraged to try to correct the interference by one or more of the following measures:

- Reorient or relocate the receiving antenna.
- Increase the separation between the equipment and receiver.
- Connect the equipment into an outlet on a circuit different from that to which the receiver is connected.
- Consult the dealer or an experienced radio / TV technician for help.

This Class B digital apparatus complies with Canadian ICES-003.

Cet appareil numérique de la classe B est conforme à la norme NMB-003 du Canada.

Perchlorate Material-special handling may apply,
See www.dtsc.ca.gov/hazardouswaste/perchlorate

This product may contain certain substances which are restricted when disposed.
Therefore, be sure to consult your contracted service dealer.

Organization of Instruction Manuals

There are three instruction manuals for this product.

- “Setup Guide” (This Manual)
This manual describes how to connect the IS1000C / IS950C and the installation procedures for the software that comes with this product.
- “Printer Driver Guide”
This manual describes specific functions of and the setup procedure for the printer driver.
- “Utility Guide”
This manual describes Console functions for checking the status of and managing this product through a network, and operation procedures for software that comes with this product.

Read each of the manuals before using this product or when there is something you do not understand while using it.

Content of Instruction Manuals

Notes

- 1) Unauthorized reproduction of all or part of this manual is strictly prohibited.
- 2) Since there may be improvements to the product, the content of this manual may change in the future without notice.
- 3) RISO takes no responsibility for effects resulting from this manual or the operation of this product.
- 4) The illustrations included in this document depict the IS1000C model in most cases.

Copyrights

RISO and ComColorExpress are trademarks or registered trademarks of RISO KAGAKU CORPORATION in the United States and other countries.

Adobe, AdobePS, PostScript, PostScript3 and the PostScript logo are either registered trademarks or trademarks of Adobe Systems Incorporated in the United States and/or other countries.

Macintosh and Mac OS are trademarks of Apple Inc.

Microsoft, Windows, Windows Vista and Windows Server are either registered trademarks or trademarks of Microsoft Corporation in the United States and/or other countries.

SOFHA is a registered trademark of SOFHA GmbH, Germany.

Other corporate names and/or trademarks are either registered trademarks or trademarks of each company, respectively.

Copyright © IS1000C / IS950C Manuals: 2017 RISO KAGAKU CORPORATION

Copyright © IS1000C / IS950C Software: 2006-2017 SOFHA GmbH, Germany




Contents

Icons Used in This Manual	6
Notice about Safety and Handling	8
Safety Precautions	8
Warning Symbols / Icons	8
Installation Locations	8
Power Connection	8
Interface Cable Connection	9
Handling	9
Warning Labels	10
Before Starting to Use	11
Installation Locations	11
Handling	11
Operation Environment	11
Overall Dimensions	12
Transfer of the Unit	12
Components and disposal of the Unit	12
Part Names and Functions	13
Front side	13
Rear side	14
Test button	15
Reset button	15
Specifications	16
Before Using the ComColorExpress IS1000C / IS950C	18
ComColorExpress IS1000C / IS950C Overview	18
Compatible Operating Systems	18
Printer Driver	18
RISO Console	19
Checking Your ComColorExpress IS1000C / IS950C Package	20
Setup and Installation of the ComColorExpress IS1000C / IS950C	22
Computer Connections	22
Software Installation	23
Installation Procedure	24
Installing on Windows	25
Installing the RISO IS1000C / IS950C Software	25
Communication settings	27
Printer Installation	29
Uninstalling the RISO IS1000C / IS950C Software	31
Installing on Macintosh (Mac OS)	33
Installing the RISO Management Tool	33
Communication settings	35
Printer Installation	37
Uninstalling the RISO IS1000C / IS950C Software	40

Installing on Linux.....	42
Registering the RISO IS1000C / IS950C Controller PPD in Linux	42
Uninstalling the Linux PPD	43
Appendix	44
Troubleshooting.....	44
Font list.....	45
Hinweise zur Sicherheit und Behandlung (Du)	52
Vorwort	52
Sicherheitsvorkehrungen.....	53
Warnungssymbole.....	53
Aufstellungsort.....	53
Spannungsanschluss	53
Anschluss des Schnittstellenkabels.....	54
Behandlung	54
Warnetiketten	55
Vor Inbetriebnahme	56
Aufstellungsort.....	56
Behandlung der Maschine.....	56
Betriebsumgebung	56
Gesamtabmessungen	57
Transfer der Einheit.....	57
Komponenten und Entsorgung der Einheit.....	57
Teilebezeichnungen und Funktionen.....	58
Vorderseite	58
Rückseite.....	59
Testknopf.....	60
Rückstellknopf	60
Technische Daten.....	61

Icons Used in This Manual

Functions, operations and cautions are described as follows in this manual.

Important!	describes items where care is necessary or where there are prohibitions.
Note	describes items where there is particularly helpful information and ones where there is something that should be known.
	indicates the title and page of an item that should be referred to and thoroughly understood. When the reference is to another manual, the name of the manual will also be noted.
 WARNING  Caution	are safety cautions. "Safety Precautions" are described on p.8. Be sure to read them before using this product.





Notice about Safety and Handling

Safety Precautions





This section describes the precautions to be observed for the safe use of this unit. Be sure to read this section.

Warning Symbols / Icons

To use the unit properly and to prevent human injury and damage to property, the following warning symbols are used. Make sure you have a full understanding of the definitions of these symbols before reading the manual.

 WARNING:	Indicates that incorrect handling by ignoring this symbol may cause death or serious human injury.
 Caution:	Indicates that incorrect handling by ignoring this symbol may cause human injury or damage to property.

Example of icons

	The  symbol indicates a prohibited action. A detailed icon of the action prohibited is shown in the symbol or near the symbol. (The left figure shows prohibition of disassembly.)
	The  symbol indicates a forced action or an instruction. A detailed icon of the recommended instruction is shown in the symbol. (The left figure shows an instruction to remove the power plug from the electrical outlet.)

Installation Locations

Caution:

- Place the unit on a flat and stable surface.
Failure to observe this may result in injury owing to the unit tilting or falling over.
- The unit is equipped with ventilation holes. Install the unit more than 150 mm (5 7/8") away from the wall. If the ventilation holes are blocked, heat is not dissipated and a fire might occur.
- Do not place the unit in a dusty or humid location.
Failure to observe this may result in the outbreak of fire or electric shocks.
- Do not place the unit in a location that is subject to water leaks or water splashes. Failure to observe this may result in the outbreak of fire or electric shocks.

Power Connection

WARNING:

- Use the specified method of installing the power supply. Failure to observe this may result in the outbreak of fire or electric shocks.
- Install the machine near the wall socket to avoid using an extension cord between the machine and the wall socket. If an extension cord is absolutely required, do not use longer than 5m (15ft). Otherwise, a fire or an electric shock might occur.
- Do not damage or modify the power cord. Placing heavy objects on the cord or using excessive force to pull or bend it may result in damage, leading to the outbreak of fire or electric shocks.
- The power cord supplied with this product can be used only for this unit. Using the cord with other electric products may result in the outbreak of fire or electric shocks.
- Do not plug or unplug the power cord with wet hands. Failure to observe this may result in electric shocks.



⚠ Caution:

- Connect the power cord and the interface cables securely. Loose connections may cause contact failures and result in the outbreak of fire.
- Do not use a damaged power cord. Replace the damaged power cord with a power cord that meets the same specifications. For replacement, contact your service representative.
- Do not pull the power cord when unplugging it. Failure to observe this may result in damage leading to the outbreak of fire or electric shocks. Be sure to hold securely onto the plug when unplugging it.
- If the unit is not used for a long time, for example due to consecutive holidays, unplug the power cord from the electrical outlet for safety.
- Pull out the power plug from the electrical outlet more than once a year and clean the prongs of the plug and their surroundings. Dust accumulating in these areas may result in the outbreak of fire.

Interface Cable Connection

⚠ Caution:

- Always use interface cables specified by RISO KAGAKU CORPORATION and ensure that they are connected to the correct devices with the correct connectors. Failure to observe this may result in the outbreak of fire.
- Do not damage or tread on interface cables. Do not place heavy objects on the cables or operate the system with loose connections. Failure to observe this may result in the outbreak of fire.

Handling

⚠ WARNING:

- Do not place containers containing water or other liquids or metallic objects on top of the unit. Any foreign matter entering the unit may result in the outbreak of fire or electric shocks.
- Do not place candles or any other naked flame near the unit.
- Do not insert or drop any metallic material or flammable substances into the unit through any opening. Failure to observe this may result in the outbreak of fire or electric shocks.
- Do not remove the covers. Failure to observe this may result in electric shocks from high-voltage parts.
- Do not dismantle or modify the unit. Failure to observe this may result in the outbreak of fire or electric shocks.
- If the unit emits excessive heat, smoke or foul odors, immediately turn off the power, unplug the power cord and contact your service representative to prevent the risk of fire and electric shocks.
- If something drops inside the unit, immediately turn off the Main Power Switch, unplug the power cord and contact your service representative. Failure to observe this may result in the outbreak of fire or electric shocks.
- Do not remove the lithium battery from inside the unit. Placing the lithium battery near fire or in water might cause explosions.
If the unit does not operate correctly due to the depletion of the lithium battery, contact your service representative.



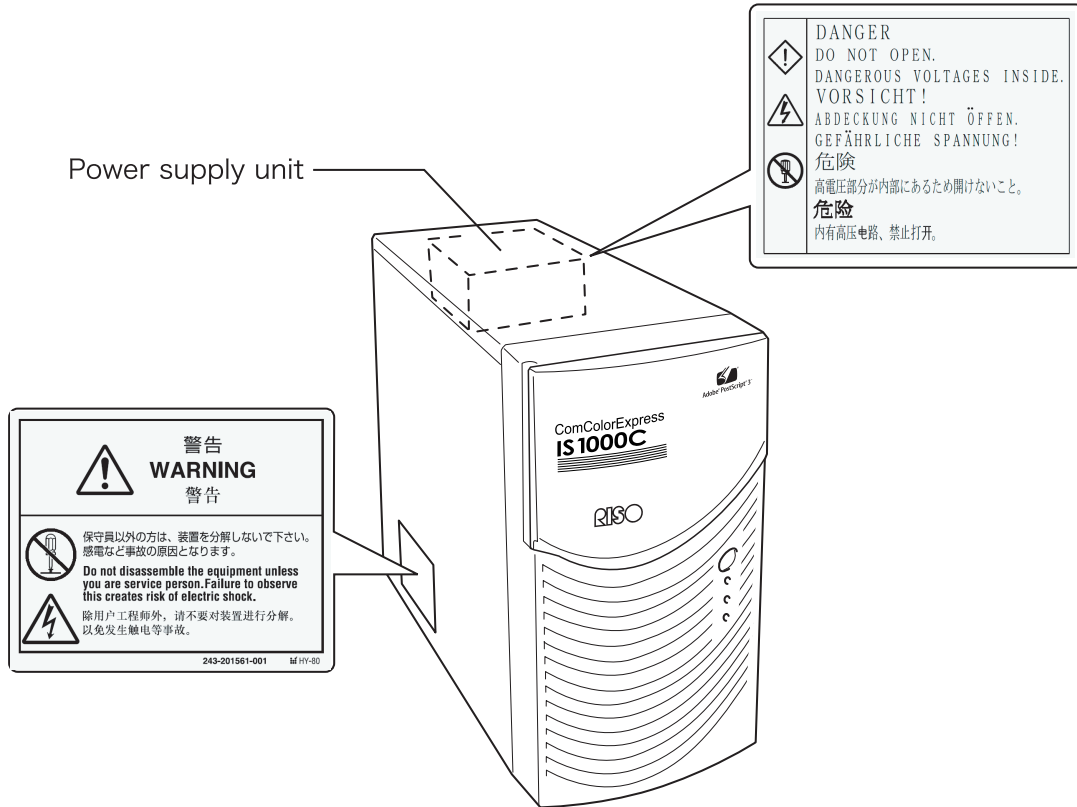
⚠ Caution:

- When moving the unit, unplug the power cord and remove any connected cables. When holding the bottom of the unit with your hands, take sufficient care not to get your fingers, your feet, and any cables caught by the unit.
- If a lightning strike seems imminent, unplug the power cord. If the sound of thunder is heard before the plug can be disconnected, do not touch the unit or the cables under any circumstances. Failure to observe this may result in the outbreak of fire or electric shocks.



Warning Labels

The following warning labels are attached to the unit for safety purposes. Read these instructions carefully. Never peel off or soil the labels. If the labels are not attached to the unit, contact your service representative.



Before Starting to Use

This section explains precautions that need to be observed when using the unit.

Installation Locations

Note the following items.

- The Location for Installation is determined based on consultations with the customer at the time of delivery.
- Avoid installing the unit in the locations listed below. Failure to observe this precaution may lead to unit failure or human injury.
 - Locations that are subject to direct sunlight or bright locations that are close to windows. (If there is no other choice, curtain the window.)
 - Locations that are subject to sudden temperature change.
 - Extremely hot and humid locations or cold and dry locations
 - Heated locations or locations exposed to direct cold air, direct hot air, or direct radiant heat
 - Badly ventilated locations
 - Dusty locations
 - Locations that are subject to frequent vibration



Handling

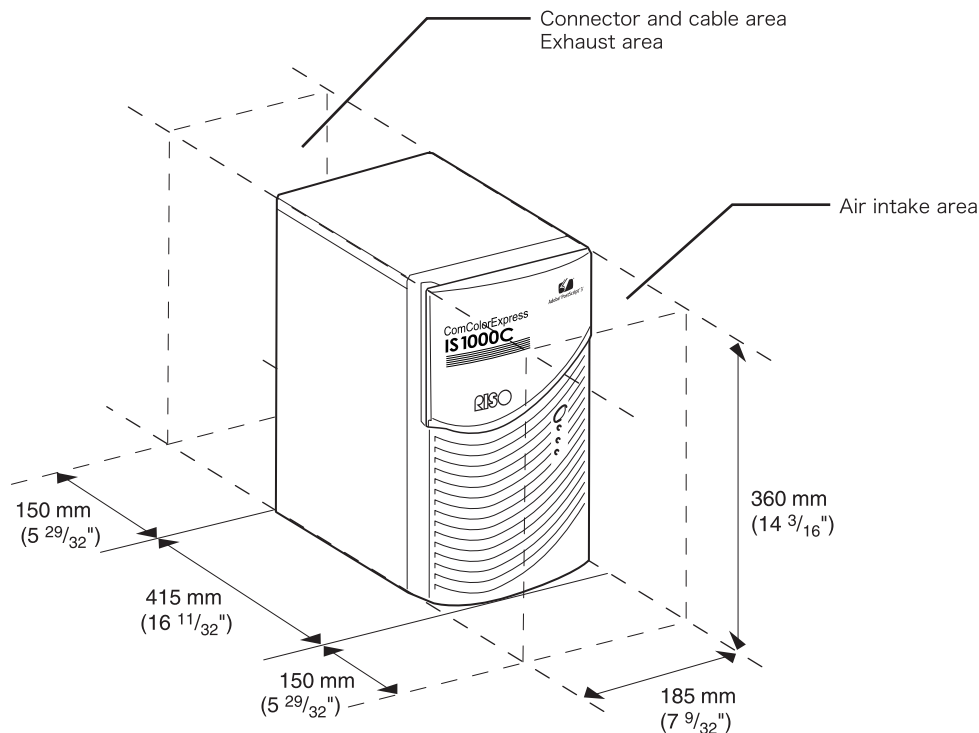
- Do not turn off the Main Power Switch or unplug the power cord forcedly during operation.
- The unit contains precision parts and must not be handled in ways other than those stipulated in this manual.
- Do not place heavy objects on or apply shocks to the unit.
- Wait at least ten seconds between switching off the power supply and switching it on again.
- When connecting or disconnecting a cable to a peripheral device, ensure that the power of this unit is off and unplug the power cord in advance.
- When moving this unit, turn off the power and unplug the power cord in advance.
- Do not use cellular phones, microcellular phones or pagers near the unit because malfunction due to radio wave might occur. Turn off all cellular phones, microcellular phones and pagers in the vicinity of the unit.
- Sudden temperature changes may result in condensation building up inside the unit, resulting in failure. When this unit is moved from a cold outside location to inside a warm room, dew condensation occurs easily. Leave the unit for a while to adapt to the temperature before using it.
- Momentary voltage drops in the power supply may result in malfunctions. To avoid this, always use an AC Uninterruptible Power Supply or similar protective system.

Operation Environment

- Appropriate environment conditions are shown below.
Temperature range: 5 °C - 35 °C (41°F - 86°F)
Humidity range: 20% - 80% (noncondensing)

Overall Dimensions

It is necessary to leave space around the air intakes and outlets.



Transfer of the Unit

When transferring (or selling) the unit to a third party, you must satisfy the following requirements.

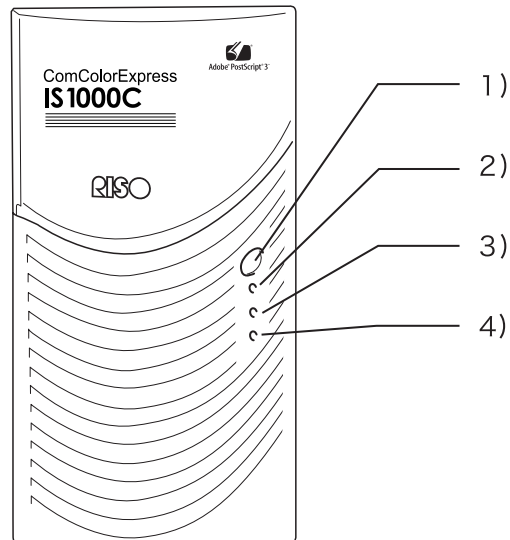
- 1) Transfer all items supplied with the unit including this document and do not keep any copies.
- 2) The requirements concerning transfer described in "Conditions for Use of Software" attached to each item of software must be satisfied.
- 3) Software for which transferal to third parties is prohibited must be deleted prior to transferal of the unit.

Components and disposal of the Unit

- For disposal of the IS1000C / IS950C, the hard disk and the battery, follow the disposal rules of each municipality. For details, contact each municipality.
- Among the parts in the unit, some parts such as the cooling fan and the built-in battery must be replaced owing to the lifespan of each relevant item. For proper operation of the unit, it is recommended to replace these parts periodically. For the replacement and the life, contact your service representative.

Part Names and Functions

Front side



1) Main Power Switch:

This switch is normally not used. Power is linked to the Power Switch on the printer's Main Body panel, which is used to turn the power on and off.

Important!:

- Do not keep pressing the main power switch to terminate the operation forcedly. This may cause improper operation of the controller.

2) ERROR indicator (orange)

Indicates the error status of the controller.

3) READY indicator (green)

Indicates the operation status of the controller.

4) DATA indicator (yellow)

Indicates the operation status of the controller only if the READY indicator is lit.

Rear side

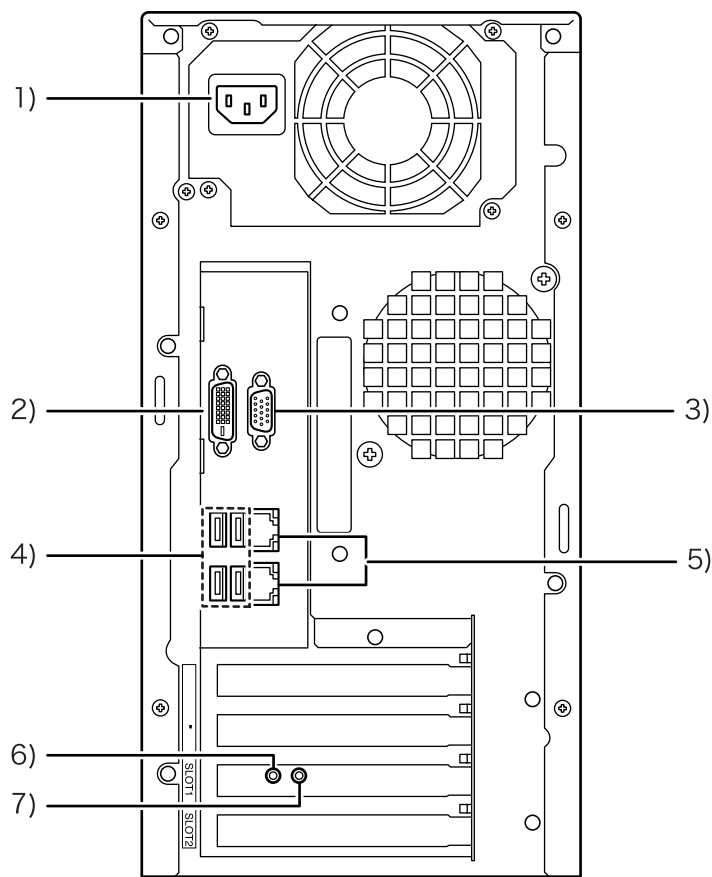
Connectors for connecting the ComColorExpress IS1000C / IS950C to other devices and two buttons are provided on the back of the unit.

Important!:

- Switch off the power to both the IS1000C / IS950C and the other device prior to connecting them together. Failure to observe this may result in malfunctions or failures.
- The permissible voltage for all input / output connectors is 5 V.

Note:

- A monitor (1024×768 or greater resolution recommended), USB keyboard, and USB mouse can be connected to the IS1000C / IS950C. (Certain features are not available. For details, refer to the separate manual, “Utility Guide”.)



- 1) Power supply
- 2) Monitor connector (DVI)
- 3) Monitor connector (VGA)
- 4) USB 2.0 connector (4 Ch)
- 5) 1000BASE-T / 100BASE-T / 10BASE-T connectors (2 Ch)
Upper: For printer connection
Lower: For computer connection
- 6) Test button
- 7) Reset button

Test button

After booting the unit, hold down the Test button until you hear one beep during the idle status of the unit. The one beep indicates a test print will be executed.

Reset button

Operating the Reset button enables you to reset the settings.

- Perform the following procedures when returning the IS1000C / IS950C's settings to the factory default settings.
 - 1)** After booting the unit, hold down the Reset button until you hear one beep during the idle status of the unit.
 - 2)** Release the Reset button within 2 seconds of hearing the one beep.
You will hear one more beep, and after the IS1000C / IS950C reboots, the following settings will return to the IS1000C / IS950C's factory default settings.
 - Network settings
 - Administrator password

- Contact your service representative when initializing the IS1000C / IS950C hard disk.

Specifications

Principal Specifications	Model name	ComColorExpress IS1000C: VB-XE34G ComColorExpress IS950C: VB-PG29G
	Printer that can be connected	ComColor 9150 / 9110 / 7150 / 7110 / 3150 / 3110
	CPU	ComColorExpress IS1000C: Intel® Xeon® E3-1275 3.4GHz ComColorExpress IS950C: Intel® Pentium® G850 2.9GHz
	Memory Capacity	ComColorExpress IS1000C: 8GB ComColorExpress IS950C: 2GB
	HDD	500GB (user available area*1: approximately 460GB) *1 User available area: Job receiving area, hold, archive, form storage, font installation area
	Controller OS	Linux
	LAN I/F	1 Ch (Ethernet 1000BASE-T, 100BASE-TX, 10BASE-T)
	Type	Outside unit type
	Power Source	ComColorExpress IS1000C: 100-240V AC, 50/60Hz, 1.1A-0.5A ComColorExpress IS950C: 100-240V AC, 50/60Hz, 0.9A-0.4A
	Power Consumption	ComColorExpress IS1000C: Max. 110W Ready*2: 75W or less Stand-by: 4W or less ComColorExpress IS950C: Max. 85W Ready*2: 65W or less Stand-by: 4W or less *2 When not printing
	Dimensions / mass (W x D x H)	185 mm x 415 mm x 360 mm (7 9/32" x 16 11/32" x 14 3/16") (excluding protrusions) / approximately 10kg (22lb)
	Safety	IEC60950-1 compliant, Indoor, pollution degree 2*3, At altitudes of 2000m or lower *3 The pollution degree of the usage environment due to dirt and dust in the air. Degree "2" corresponds to a general indoor environment.
	PDL	PostScript®3 (CPSI 3019) *4 PDF (1.7) PCL/PCL XL (PCL5c 1.38) TIFF (6.0) PPML *4 Genuine Adobe engine
	Applicable protocol	TCP/IP, HTTP, HTTPs (SSL), DHCP, FTP*5, NetBIOS*6, AppleTalk®, LPR, IPP, Port 9100 (RAW port), IPv6, IPsec *5 FTP: Hot-folder function *6 NetBIOS: Printing function, Hot-folder function
Installed font	PS: 139 fonts (Type 1: 120, TrueType: 19) PCL: 80 fonts	

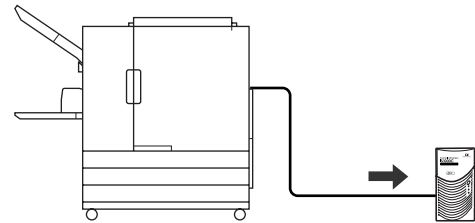
Principal Specifications	Compatible OS	<p>Windows® Server 2003 (32-bit / 64-bit edition) / Windows Server® 2003 R2 (32-bit / 64-bit edition) / Windows Server® 2008 (32-bit / 64-bit edition) / Windows Server® 2008 R2 (64-bit edition) / Windows® XP (32-bit edition) / Windows Vista® (32-bit / 64-bit edition) / Windows® 7 (32-bit / 64-bit edition) / Windows Server® 2012 (64-bit edition) / Windows Server® 2012 R2 (64-bit edition) / Windows® 8 (32-bit / 64-bit edition) / Windows® 8.1 (32-bit / 64-bit edition) / Windows® 10 (32-bit / 64-bit edition) / Windows Server® 2016 (64-bit edition)</p> <p>Mac OS X v10.4 / v10.5 / v10.6 / v10.7 (Lion)</p> <p>OS X v10.8 (Mountain Lion) / v10.9 (Mavericks) / v10.10 (Yosemite) / v10.11 (El Capitan)</p> <p>macOS v10.12 (Sierra) / v10.13 (High Sierra)</p> <p>Linux (compatible with PPD only)</p>
--------------------------	---------------	--

Before Using the ComColorExpress IS1000C / IS950C

ComColorExpress IS1000C / IS950C is a controller for use with ComColor series (9150 / 9110 / 7150 / 7110 / 3150 / 3110) printers that features a high-performance interpreter that supports networks and PostScript®3. Combining it with the software that comes with the product enables you to take advantage of a variety of functions.

ComColorExpress IS1000C / IS950C Overview

- The IS1000C / IS950C features a Pure Postscript®3 compatible RIP from Adobe Systems that enables high-quality output.
- Data processing status is easily ascertained by simply glancing at the front panel LED indicators.
- The IS1000C / IS950C features a safety design that automatically enters into system shutdown procedures when the power switch is pressed for shut down.



Compatible Operating Systems

ComColorExpress IS1000C / IS950C is compatible with the following operating systems.

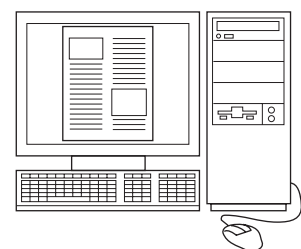
- Windows Server 2003 / Windows Server 2003 R2 / Windows Server 2008 / Windows Server 2008 R2 / Windows XP / Windows Vista / Windows 7 / Windows Server 2012 / Windows Server 2012 R2 / Windows 8 / Windows 8.1 / Windows 10 / Windows Server 2016
- Mac OS v10.5 / v10.6 / v10.7 (Lion) / v10.8 (Mountain Lion) / v10.9 (Mavericks) / v10.10 (Yosemite) / v10.11 (El Capitan) / v10.12 (Sierra) / v10.13 (High Sierra)
- Linux (compatible with PPD only)

Printer Driver

This product uses an Adobe PS printer driver provided by Adobe Systems Incorporated and Microsoft Corporation incorporating a dedicated plug-in and PPD file.

- This printer driver makes it easy to configure optimal settings for use with RISO high-speed colour printers.
- The printer driver enables you to easily conduct operations linked with the RISO Console such as specification of output destination queues.

For details about the printer driver, refer to the separate manual, "Printer Driver Guide".



RISO Console

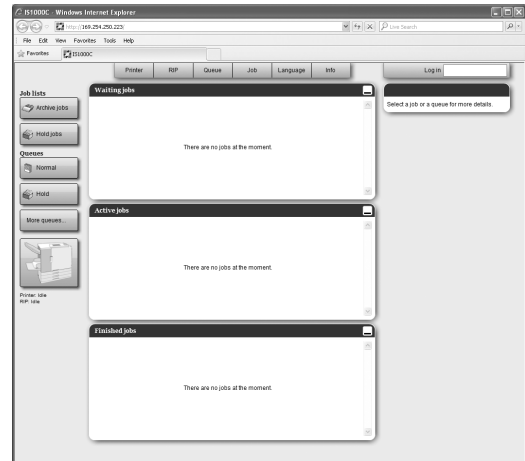
The RISO Console is a utility software that draws out the full capabilities of the ComColorExpress IS1000C / IS950C.

- Accessing the IS1000C / IS950C from your web browser enables you, among other things, to utilize the job manager for output data, and to monitor the printer.
- This software has been created using Java Script and HTML. This enables you to utilize the RISO Console via the same interface, regardless of the computer operating system you use.
- The software makes available a variety of convenient functions, including the **[Create new queue]** function that reduces the time taken to set printing conditions, and the **[Hold]** function that enables quick printing by simply retrieving the data registered in advance.

For details about the RISO Console, refer to the separate manual, "Utility Guide".

Note:

- By connecting a monitor (1024×768 or greater resolution recommended), USB keyboard, and USB mouse to the IS1000C / IS950C, you can use Riso Console without a computer. (Certain features are not available. For details, refer to the separate manual, "Utility Guide".)

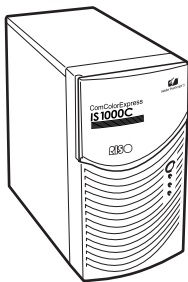


Checking Your ComColorExpress IS1000C / IS950C Package

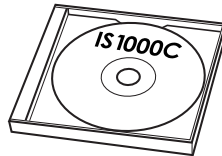
Check that your ComColorExpress IS1000C / IS950C package contains the components illustrated below. If any components are missing, contact your service representative.

Important!:

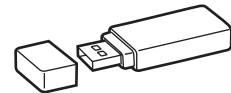
- If the IS1000C / IS950C package was exposed to extreme temperature conditions, wait a few hours before opening the plastic bag packing the IS1000C / IS950C unit. Otherwise, water may condense inside the unit, thus causing damage to electronic components there.



IS1000C / IS950C unit



RISO IS1000C / IS950C Software CD-ROM



USB dongle

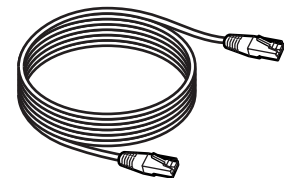


User's Manuals

- Setup Guide (This manual)
- Printer Driver Guide
- Utility Guide



End User License Agreement



LAN cable

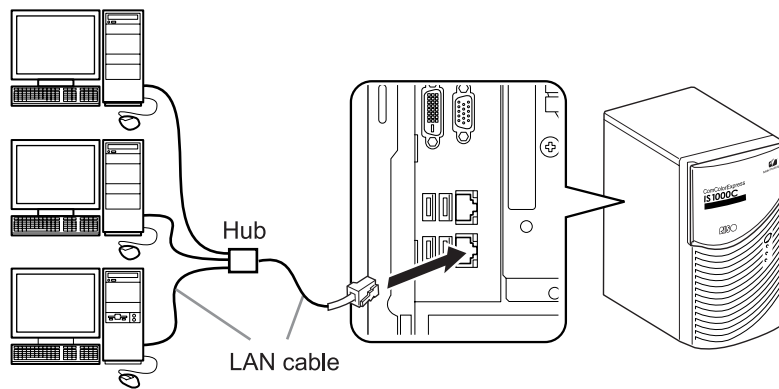
(For connecting the IS1000C / IS950C and printer)

Setup and Installation of the ComColorExpress IS1000C / IS950C

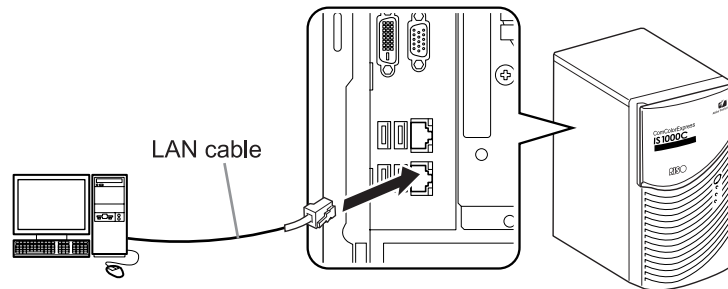
Computer Connections

Connect the IS1000C / IS950C and computer to the network.

- Connecting multiple computers:



- Connecting to one computer:



Important!:

- Make sure to connect the LAN cable to the lower connector.
The upper connector is for printer connection.

Note:

- Use a commercial STP cable (Shielded Twist Pair cable) for the LAN cable.

Software Installation

The following software is included in the software CD-ROM. It must be installed on your computer before using ComColorExpress IS1000C / IS950C.

◆ Printer Driver

This is the printer driver installer for the IS1000C / IS950C. Run this when installing the printer driver. The printer driver is required when sending document data created on your computer to the IS1000C / IS950C and printing it.

Note:

- When installing the printer driver on Windows, your existing PS printer driver may be overwritten, and you may be unable to output with PS printer drivers or image setters provided by other companies. When deleting the IS1000C / IS950C printer driver, uninstall the printer driver. “Uninstalling the RISO IS1000C / IS950C Software”
p.31

◆ RISO Management Tool

This software carries out such tasks as setting the IP address and conducting wake-up processes. It is necessary for you to install this software and set the IP address for the IS1000C / IS950C before installing the printer driver.

Note:

- Wake-up process refers to the function that enables your computer to activate the IS1000C / IS950C from sleeping status.
- Do not connect two or more controllers (with an IP address of 0.0.0.0 for IPv4, or an IP address of 0:0:0:0:0:0:0:0 for IPv6) for which the IP address has not been set to the same network.
- A computer using the RISO Management Tool and the IS1000C / IS950C must be connected to the same network segment. You cannot set the IP address for the IS1000C / IS950C in a situation where the computer using the RISO Management Tool and the IS1000C / IS950C are not connected to the same segment. After you set the IP address for the IS1000C / IS950C, you can use the RISO Management Tool even in a situation where the computer using the RISO Management Tool and the IS1000C / IS950C are not connected to the same segment.

IP Addresses

This is unique information assigned to each device on a network for identifying the device. Confirm the IP address to be assigned to the IS1000C / IS950C with your network administrator.

◆ SMAP (Windows only)

This software enables you to drag and drop files into the output destination queue and directly execute printing. Install SMAP if necessary.

Installation Procedure

Before using the ComColorExpress IS1000C / IS950C, install the software in the following order and make the settings.

Installing the RISO IS1000C / IS950C Software
(For Macintosh, installing the RISO Management Tool)



Set the IP address for the IS1000C / IS950C using the RISO Management Tool



Installing the printer driver

Note:

- The RISO Management Tool enables you to set the IP address for the IS1000C / IS950C, and also enables you to perform the monitoring and wake-up processes for the IS1000C / IS950C. Confirm the IP address with your network administrator.
- Install SMAP if necessary. (Windows only)

Installing on Windows

Installing the RISO IS1000C / IS950C Software

Note:

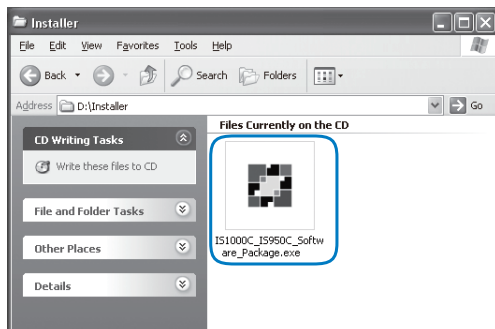
- Here, the explanation will use a Windows XP screen.
- If you have other software applications running, shut them down before installing the software.

1 Insert the RISO IS1000C / IS950C Software CD-ROM in your computer's CD-ROM drive.

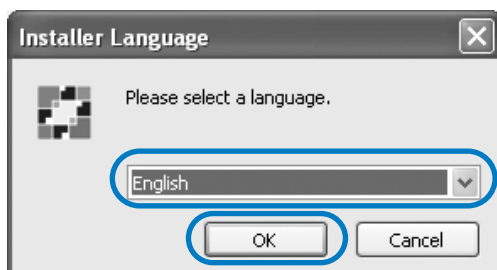
The installer starts, and the "Installer Language" dialog box is displayed.

Note:

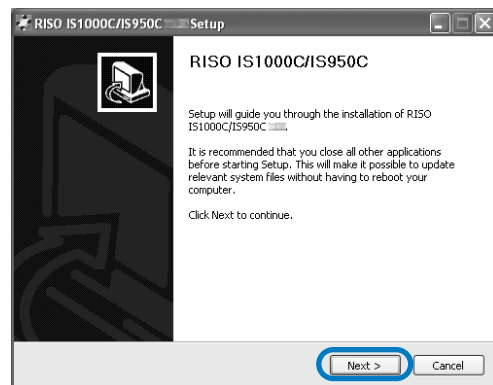
- If the installer does not start, double-click the "IS1000C_IS950C_Software_Package.exe" file on the CD-ROM.
- When the **[User Account Control]** dialog is displayed, click **[Yes]** or **[Allow]** (for Windows Vista).



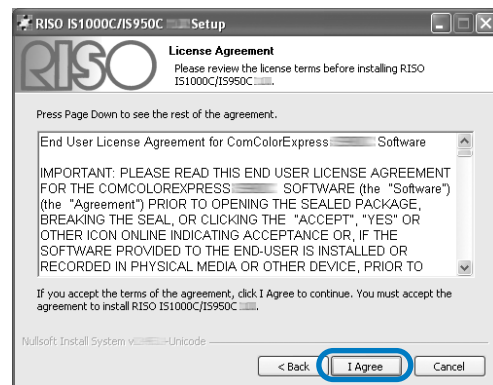
2 Select [English] from the list, and click the [OK] button.



3 Click the [Next] button.



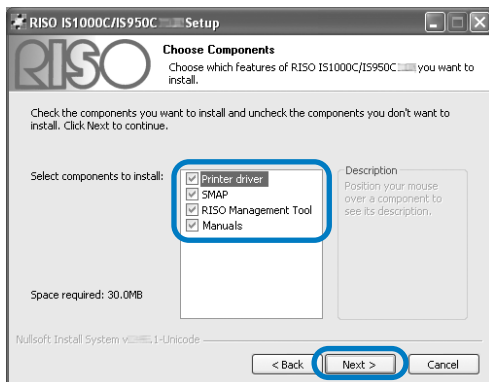
4 Read the End User License Agreement, and click the [I Agree] button.



Note:

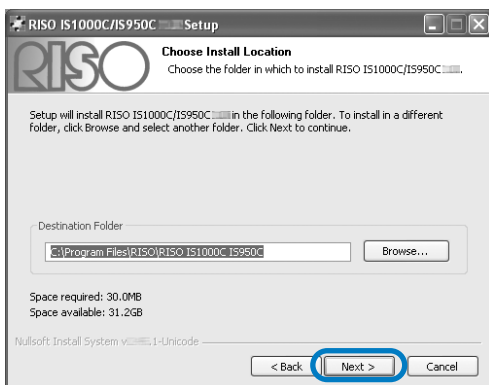
- If you do not agree with the End User License Agreement, the software cannot be installed.

5 Select the components you want to install, and click the [Next] button.



- **Printer driver**
This is the printer driver installer for the IS1000C / IS950C. Run this when installing the printer driver.
- **SMAP**
This software enables you to drag and drop files into the output destination queue and directly execute printing. Place a checkmark in **[SMAP]** if you want to use the SMAP.
- **RISO Management Tool**
This software enables you to set the IP address for the IS1000C / IS950C, and also enables you to perform the monitoring and wake-up processes for the IS1000C / IS950C. Place a checkmark in **[RISO Management Tool]** if you want to use the RISO Management Tool. Confirm the IP address with your network administrator.
- **Manuals**
These are manuals for the IS1000C / IS950C.

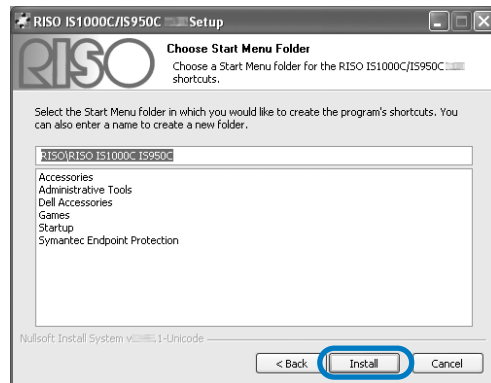
6 Confirm the destination for installation, and click the [Next] button.



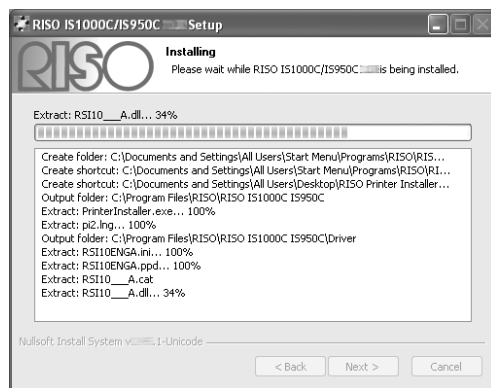
Note:

- If you want to change the destination folder for installation, click the **[Browse]** button and specify a folder.

7 Click the [Install] button.

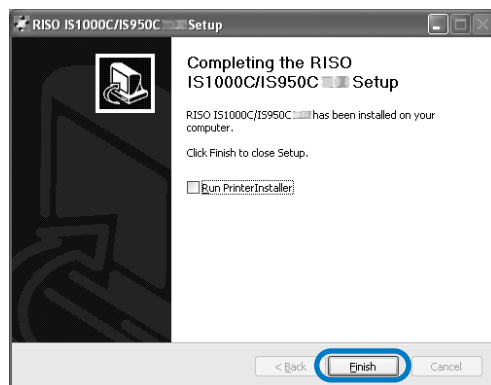


Installation begins.



8 Complete the installation.

When the dialog box below is displayed, click the **[Finish]** button, and complete the installation.



Note:

- If there is a checkmark in **[Run PrinterInstaller]**, the Printer Installer will start. If network settings for the IS1000C / IS950C have not been completed, remove the checkmark from **[Run PrinterInstaller]**, and finish to close the installer. Then, set the IP address for the IS1000C / IS950C using the RISO Management Tool before installing the printer driver. "Communication settings" p.27

Communication settings

Start the RISO Management Tool to set the IP address for the ComColorExpress IS1000C / IS950C.

Note:

- Here, the explanation will use a Windows XP screen.
- Confirm the IP address for the IS1000C / IS950C and network settings with your network administrator.
- You can configure network settings via the operation panel on the printer. For details, refer to “Ext. Controller Setting” in the printer’s “Administrator Guide”.

Important!:

- Before performing the following operations, be sure that the IS1000C / IS950C is connected to the computer. “Computer Connections” p.22
Confirm that the computer and the IS1000C / IS950C are connected to the same network segment.

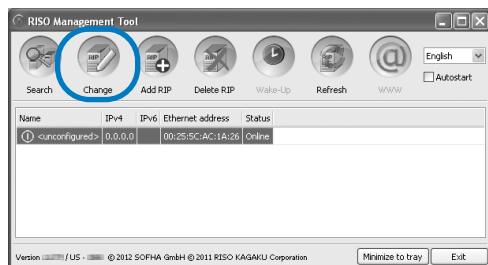
1 Select [Start]-[All Programs]-[RISO]-[RISO IS1000C IS950C]-[RISO Management Tool].

For Windows 8 / Windows 8.1, open the “Apps” screen and click **[RISO Management Tool]** in the “RISO IS1000C IS950C” group.

For Windows 10, select **[Start]-[All apps]-[RISO IS1000C IS950C]-[RISO Management Tool]**.

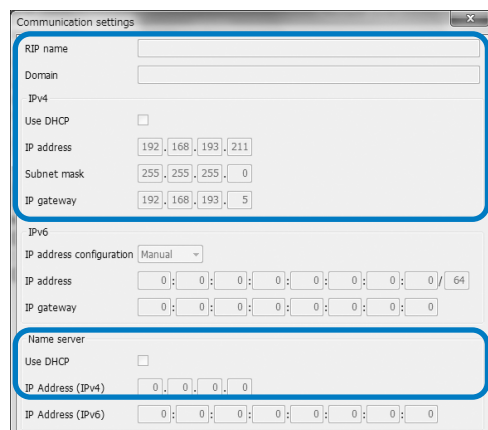
Start the RISO Management Tool, and the IS1000C / IS950C with an IP address of 0.0.0.0 (for IPv4) or 0:0:0:0:0:0:0:0 (for IPv6) is displayed in the list.

2 Select the controller, and click [Change].



3 Configure the IS1000C / IS950C Communication settings.

◆ For IPv4



- RIP name
Enter the controller name using only alphanumeric characters and hyphens within 15 characters.

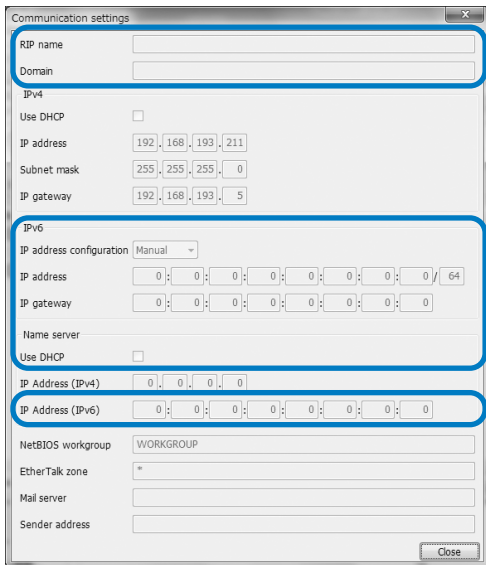
Note:

- Enter an alphabetic character as the first digit in the name.
- Enter an alphabetic character or numeric character as the last digit in the name.
- Domain
Enter the domain name of the network to which the printer is connected.
- Use DHCP
If a DHCP server is in operation in the network, the controller can acquire an IP address through the DHCP server by placing a checkmark in **[Use DHCP]**.
If you are using a fixed IP address, remove the checkmark, and set the IP address manually.

Important!:

- The following IP addresses may be already be used for the printer port. Do not enter an address that is used for the printer port setting.
IP address A: 10.255.255.251
IP address B: 172.16.255.251
IP address C: 192.168.255.251
For printer port settings, refer to the separate manual, “Utility Guide”.
- Subnet mask
Enter the subnet mask of the network to which the controller is connected.
- IP gateway
Enter the gateway address of the network to which the controller is connected.
- Name server
If you are using a DNS server to connect to the network, enter the IP address of the DNS server.
- IP Address (IPv4)
If you are not using a DHCP server, enter the IP address being assigned to the controller.

◆ For IPv6



Important!:

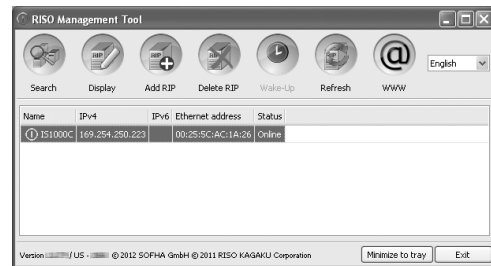
- If network settings for IPv4 have already been configured, IPv6 setting items will be grayed out. To configure IPv6 network settings, reset all settings before configuring the network.
- RIP name
Enter the controller name using only alphanumeric characters and hyphens within 15 characters.

Note:

- Enter an alphabetic character as the first digit in the name.
- Enter an alphabetic character or numeric character as the last digit in the name.
- Domain
Enter the domain name of the network to which the printer is connected.
- IP address configuration: Manual / Stateless address / Stateful address
- IP address / Prefix*: Enter alphanumeric characters.
Enter a numeric character for “ * ”.
- IP gateway: Enter alphanumeric characters.
- Use DHCP
If a DHCP server is in operation in the network, the controller can acquire an IP address through the DHCP server by placing a checkmark in **[Use DHCP]**. If you are using a fixed IP address, remove the checkmark, and set the IP address manually.
- IP Address (IPv6)
If you are not using a DHCP server, enter the IP address being assigned to the controller.

4 Click the [Ok] button.

The RIP name and IP address are displayed in the list.



The IS1000C / IS950C reboots automatically, and the settings configured at step 3 become effective.

Then, install the printer driver. See “Printer Installation” p.29

Note:

- Network setting details can be changed from **[Communication settings]** on the RISO console.
For details, refer to the separate manual, “Utility Guide”.
- If the IS1000C / IS950C does not reboot, press the power switch on the IS1000C / IS950C main unit to reboot.

Printer Installation

Note:

- Here, the explanation will use a Windows XP screen.
- If you have other software applications running, shut them down before installing the software.
- Before installing the printer driver, set the IP address for the IS1000C / IS950C.
"Communication settings" p.27

1 Select [Start]-[All Programs]-[RISO]-[RISO IS1000C IS950C]-[RISO Printer Installer].

For Windows 8 / Windows 8.1, open the "Apps" screen and click **[RISO Printer Installer]** in the "RISO IS1000C IS950C" group.

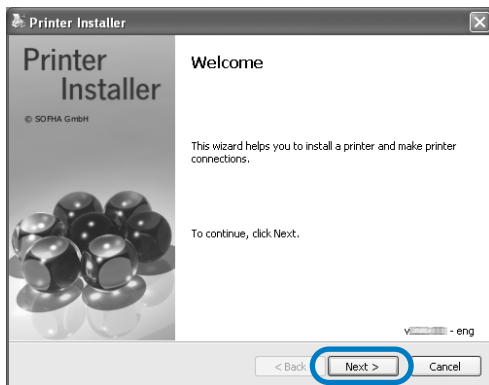
For Windows 10, select **[Start]-[All apps]-[RISO IS1000C IS950C]-[RISO Printer Installer]**.

The Printer Installer starts.

Note:

- You can also start the Printer Installer by double-clicking the **[RISO Printer Driver]** icon on your computer's desktop.
- When the **[User Account Control]** dialog is displayed, click **[Yes]** or **[Allow]** (for Windows Vista).

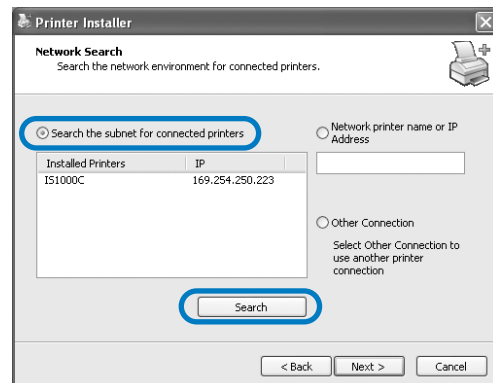
2 Click the [Next] button.



Note:

- When the **[New printer driver from disk?]** dialog box is displayed, select **[Install new printer from installation disk]**, and click the **[Next]** button.

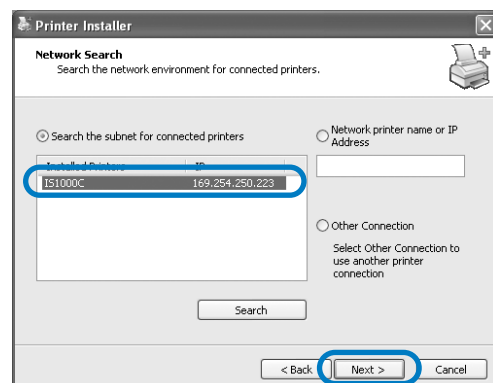
3 Select [Search the subnet for connected printers], and click the [Search] button.



Note:

- Specify the IS1000C / IS950C.
- If the computer and the IS1000C / IS950C are not connected to the same network segment, the IS1000C / IS950C will not be found. Select **[Network printer name or IP Address]** and enter the network printer name or IP address to refer to the IS1000C / IS950C.
- You can also select **[Other Connection]** and specify other connection method.

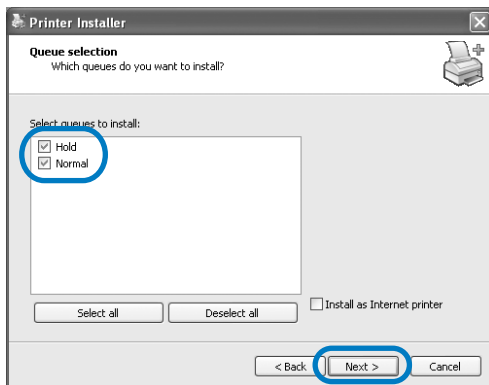
4 Select the printer name, and click the [Next] button.



Note:

- If the IS1000C / IS950C has both an IPv4 and IPv6 address, both addresses are displayed.

5 Select the queues you want to install, and click the [Next] button.

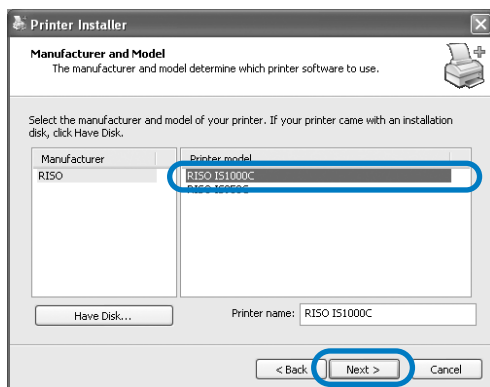


Note:

- **[Normal]** queue (e.g. IS1000C / IS950CG-Normal)
Output document data is processed in order on the printer.
- **[Hold]** queue (e.g. IS1000C / IS950CG-Hold)
Output document data is saved in the IS1000C / IS950C. Saved data is processed by giving commands with the RISO Console.
- Custom queue (e.g. IS1000C / IS950CG-ABC)
If the administrator has registered custom queues in the IS1000C / IS950C, queues that have been already registered will be displayed in the queue selection list. Output document data is processed in accordance with the queue settings registered by the administrator.

For details, refer to the separate manual, "Utility Guide".

6 Select the printer name, and click the [Next] button.

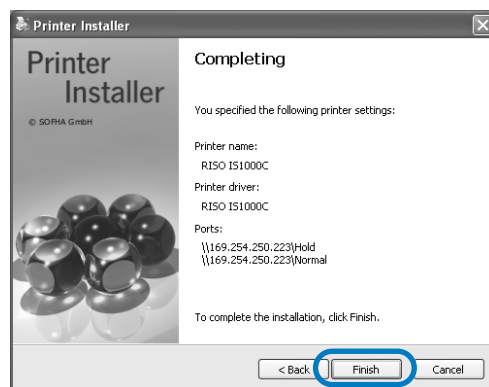


Note:

- If the manufacturer and the printer model are not displayed, click the **[Have Disk]** button, and on the folder indicated as the installation destination in step 6 of "Installing the RISO IS1000C / IS950C Software", open the Driver folder inside the RISO IS1000C / IS950C folder, and select Setup.inf.
"Installing the RISO IS1000C / IS950C Software" p.25
- If another IS1000C / IS950C printer driver has already been installed, the **[Existing driver]** dialog box will be displayed.
In this case, select **[Replace existing driver]**, and replace the existing driver with the new driver.

7 Click the [Finish] button.

When the dialog box below is displayed, click the **[Finish]** button, and close the wizard.



Important!:

- If "Windows Logo testing", "Windows Security", or "Digital Signature Not Found" is displayed, continue with the installation process.

Note:

- When you install the printer as an IP printer, the port name becomes http://the printer name (or the IP address):631/printers/queue name.

Uninstalling the RISO IS1000C / IS950C Software

Perform the following operations to delete (uninstall) the RISO IS1000C / IS950C Software and the printer driver.

Note:

- Here, the explanation will use a Windows XP screen.
- If you have other software applications running, shut them down before uninstalling the software.

1 Open the print folder.

For Windows XP:

Select **[Printers and Faxes]** from the **[Start]** menu and open the **[Printers and Faxes]** folder.

For Windows Vista:

Click on the **[Start]** icon-**[Control Panel]-[Hardware and Sound]-[Printers]** and open the **[Printers]** folder.

For Windows 7:

Click on the **[Start]** icon-**[Control Panel]-[Hardware and Sound]-[Devices and Printers]** and open the **[Devices and Printers]** folder.

For Windows 8 / Windows 8.1:

Open the “Apps” screen and click **[Control Panel]-[Hardware and Sound]-[Devices and Printers]** and open the **[Devices and Printers]** folder.

For Windows 10:

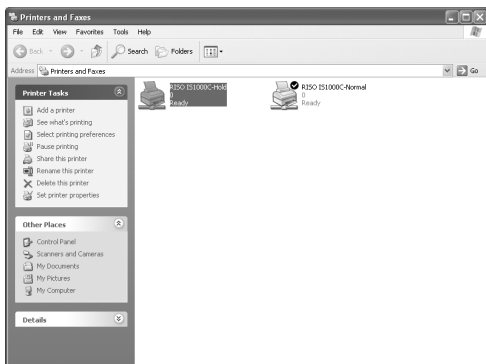
Right-click on the **[Start]** icon and click **[Control Panel]-[Hardware and Sound]-[Devices and Printers]** and open the **[Devices and Printers]** folder.

2 Delete the icon for the printer to delete.

Right click the icon while the printer is selected and select **[Delete]** from the menu list.

Note:

- Click **[Yes]** when the printer deletion confirmation dialog box is displayed.



The printer is deleted, and the icon disappears. If multiple queues are installed for the IS1000C / IS950C, repeat step 2, and delete all of the printers (queues).

Then, delete the RISO IS1000C / IS950C Software.

3 Start the Uninstaller.

For Windows XP / Windows Vista / Windows 7: Click **[Start]-[All Programs]-[RISO]-[RISO IS1000C IS950C]-[Uninstall]** in this order.

For Windows 8 / Windows 8.1:

1) Open the “Apps” screen and click **[Control Panel]-[Program]-[Programs and Features]** and open **[Uninstall or change a program]**.

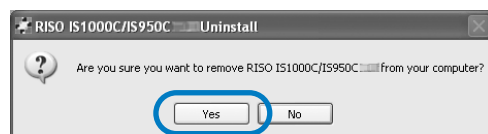
2) Select **[RISO IS1000C/IS950C *.*]** and click **[Uninstall/Change]**.

For Windows 10:

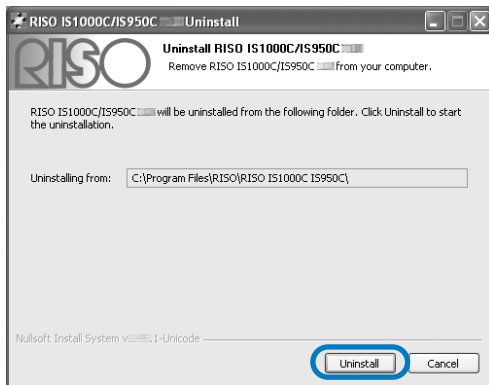
1) Right-click on the **[Start]** icon and click **[Control Panel]-[Program]-[Programs and Features]** and open **[Uninstall or change a program]**.

2) Select **[RISO IS1000C/IS950C *.*]** and click **[Uninstall/Change]**.

4 Click the [Yes] button.

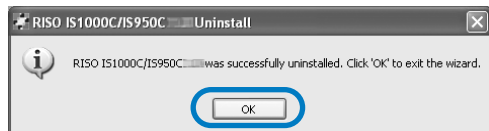


5 Click the [Uninstall] button.



Uninstallation begins.

6 Click the [OK] button.



This completes deletion of the RISO IS1000C / IS950C Software.

Installing on Macintosh (Mac OS)

Installing the RISO Management Tool

Note:

- If you have other software applications running, shut them down before installing the software.

1 Insert the RISO IS1000C / IS950C Software CD-ROM in your computer's CD-ROM drive.

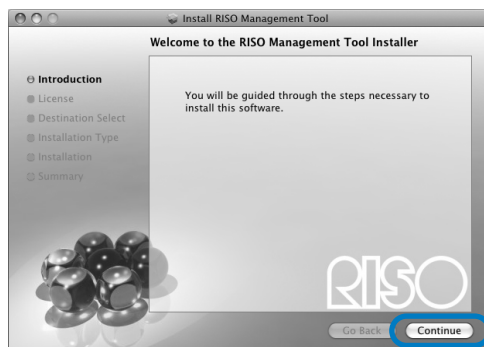
2 Start the Installer.

Double-click the pkg file [IS1000C IS950C-RISO-ManagementTool 10*.pkg] that is compatible with your version of Mac OS.

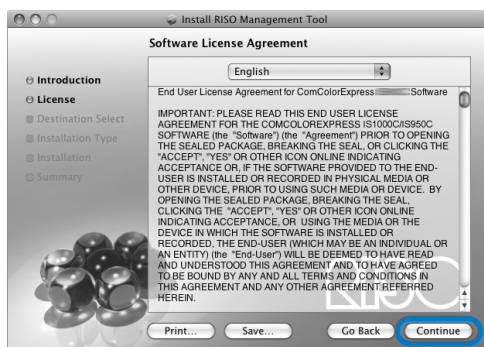
Note:

- If there is no compatible pkg file, download one from the RISO homepage.

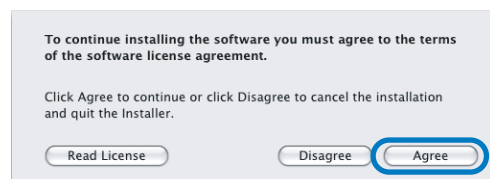
3 Click the [Continue] button.



4 Read the End User License Agreement, and click the [Continue] button.



5 Click the [Agree] button.



Note:

- If you do not agree with the End User License Agreement, the software cannot be installed.

6 Click the [Install] button.



Note:

- From the second installation onwards, the [Install] button will change to the [Upgrade] button.

7 Enter [Name] and [Password] on the Authenticate dialog box, and click the [OK] button.



Note:

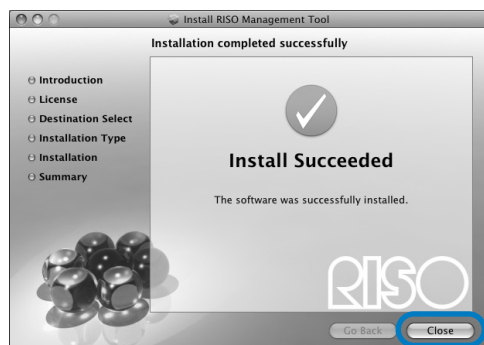
- Confirm [Name] and [Password] with your network administrator.

Installation begins.



8 Complete the installation.

When the dialog box below is displayed, click the [Close] button, and complete the installation.



IP address setting for the IS1000C / IS950C is configured next.

“Communication settings” [p.35](#)

Communication settings

Start the RISO Management Tool to set the IP address for the ComColorExpress IS1000C / IS950C. If you use TCP/IP, set the IP address in the following procedures.

Note:

- Confirm the IP address for the IS1000C / IS950C and network settings with your network administrator.

Important!:

- Before performing the following operations, be sure that the IS1000C / IS950C is connected to the computer. "Computer Connections" p.22
Confirm that the computer and the IS1000C / IS950C are connected to the same network segment.

1 Open the Mac OS volume, and select [Applications] - [RISO IS1000C] or [RISO IS950C].

2 Double-click [RISO Management Tool].

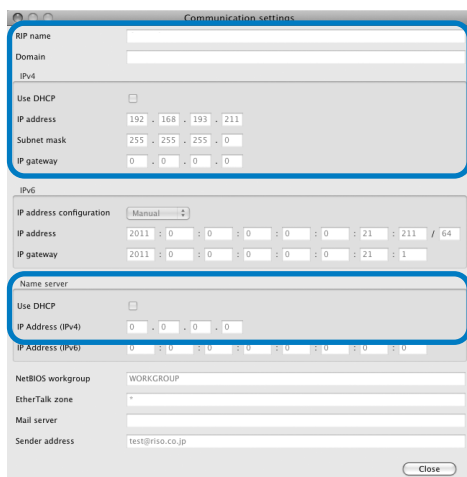
Start the RISO Management Tool, and the IS1000C / IS950C with an IP address of 0.0.0.0 (for IPv4) or 0:0:0:0:0:0:0:0 (for IPv6) is displayed in the list.

3 Select the controller, and click [Change].



4 Configure IS1000C or IS950C Communication settings.

◆ For IPv4



- RIP name
Enter the controller name using only alphanumeric characters and hyphens within 15 characters.

Note:

- Enter an alphabetic character as the first digit in the name.
- Enter an alphabetic character or numeric character as the last digit in the name.
- Domain
Enter the domain name of the network to which the printer is connected.
- Use DHCP
If a DHCP server is in operation in the network, the controller can acquire an IP address through the DHCP server by placing a checkmark in [Use DHCP].
If you are using a fixed IP address, remove the checkmark, and set the IP address manually.

Important!:

- The following IP addresses may be already be used for the printer port. Do not enter an address that is used for the printer port setting.
IP address A: 10.255.255.251
IP address B: 172.16.255.251
IP address C: 192.168.255.251
For printer port settings, refer to the separate manual, "Utility Guide".
- Subnet mask
Enter the subnet mask of the network to which the controller is connected.
- IP gateway
Enter the gateway address of the network to which the controller is connected.
- Name server
If you are using a DNS server to connect to the network, enter the IP address of the DNS server.
- IP Address (IPv4)
If you are not using a DHCP server, enter the IP address being assigned to the controller.

◆ For IPv6



Important!:

- If network settings for IPv4 have already been configured, IPv6 setting items will be grayed out. To configure IPv6 network settings, reset all settings before configuring the network.
- RIP name
Enter the controller name using only alphanumeric characters and hyphens within 15 characters.

Note:

- Enter an alphabetic character as the first digit in the name.
- Enter an alphabetic character or numeric character as the last digit in the name.
- Domain name
Enter the domain name of the network to which the printer is connected.
- IP address configuration: Manual / Stateless address / Stateful address
- IP address / Prefix*: Enter alphanumeric characters.
Enter a numeric character for “ * ”.
- IP gateway: Enter alphanumeric characters.
- Use DHCP
If a DHCP server is in operation in the network, the controller can acquire an IP address through the DHCP server by placing a checkmark in **[Use DHCP]**. If you are using a fixed IP address, remove the checkmark, and set the IP address manually.
- IP Address (IPv6)
If you are not using a DHCP server, enter the IP address being assigned to the controller.

5 Click the [Ok] button.

The RIP name and IP address are displayed in the list.



The IS1000C / IS950C reboots automatically, and the settings configured at step 4 become effective.

Then, install the printer driver. See “Printer Installation” p.37

Note:

- Network setting details can be changed from **[Communication settings]** on the RISO Console. For details, refer to the separate manual, “Utility Guide”.
- If the IS1000C / IS950C does not reboot, press the power switch on the IS1000C / IS950C main unit to reboot.

Printer Installation

Note:

- Before installing the printer driver, set the IP address for the IS1000C / IS950C. "Communication settings" p.35

1 Insert the RISO IS1000C / IS950C Software CD-ROM in your computer's CD-ROM drive.

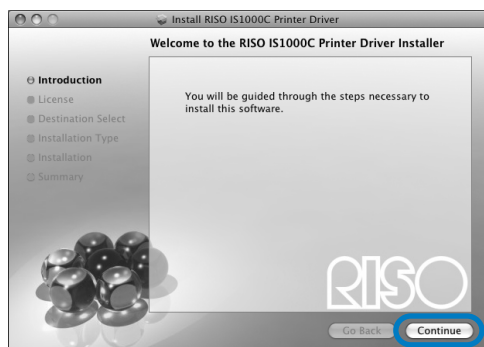
2 Start the Installer.

Double-click the pkg file [IS1000C IS950C-PD 10.*.pkg] that is compatible with your version of Mac OS.

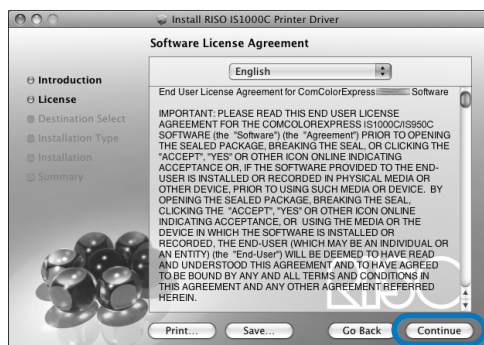
Note:

- If there is no compatible pkg file, download one from the RISO homepage.

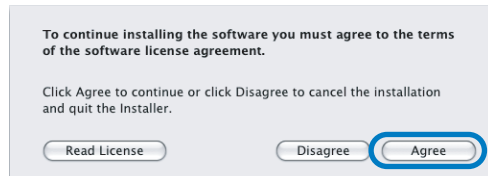
3 Click the [Continue] button.



4 Read the End User License Agreement, and click the [Continue] button.



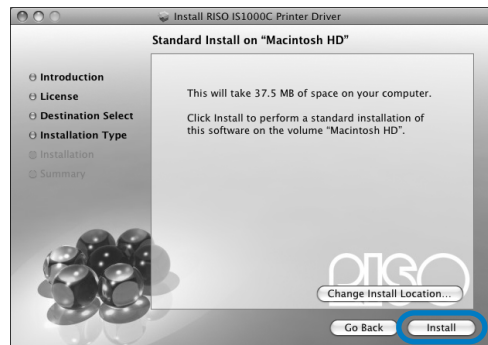
5 Click the [Agree] button.



Note:

- If you do not agree with the End User License Agreement, the software cannot be installed.

6 Click the [Install] button.



Note:

- From the second installation onwards, the [Install] button will change to the [Upgrade] button.

7 Enter [Name] and [Password] on the Authenticate dialog box, and click the [OK] button.



Note:

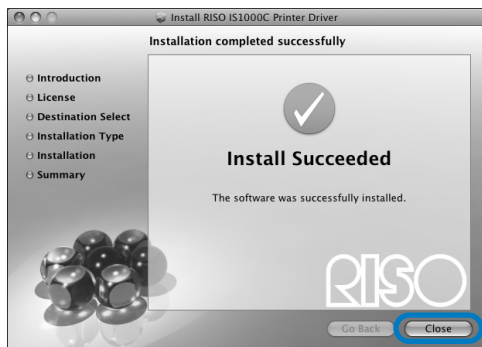
- Confirm **[Name]** and **[Password]** with your network administrator.

Installation begins.



8 Complete the installation.

When the dialog box below is displayed, click the **[Close]** button, and complete the installation.



9 Add the printer.

- 1) Open the Mac OS volume, and open the **[Applications]** - **[System Preferences]** folders.
- 2) Click **[Printers & Scanners]**, **[Print & Fax]** (for the v10.5 and v10.6) or **[Print & Scan]** (for the v10.7 (Lion) and v10.8 (Mountain Lion)).
- 3) Click the **[+]** button.

Note:

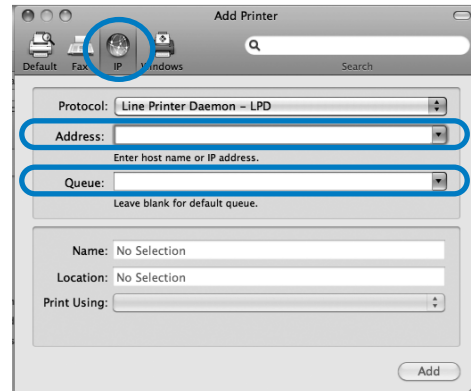
- If there is no usable printer available, the **[There are no usable printers available]** dialog box will be displayed. In this case, click the **[Add]** button, and display the **[Printer List]** dialog box.

10 Set the queues you want to install.

◆ **For Mac OS v10.6 or later**

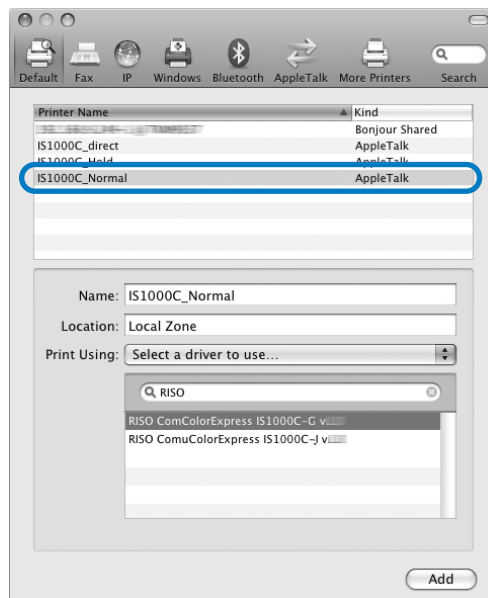
Click **[IP]** on the **[Add Printer]** window and enter the IP Address and Queue.

- Address
Enter the IP address set in the Communication settings (p.35).
- Queue
Enter the Queue in lowercase in accordance with the type of output you want to achieve.



◆ **For Mac OS v10.5**

Select the queues you want to install in the **[Printer Browser]** window. Select a queue from the printer name list in accordance with the type of output you want to achieve.



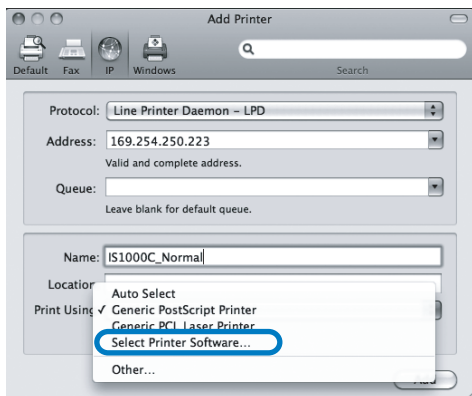
Note:

- **[normal]** queue
Output document data is processed in order on the printer.
- **[hold]** queue
Output document data is saved in the IS1000C / IS950C. Saved data is processed by giving commands with the RISO Console.
- **[direct]** queue
Do not use the **[direct]** queue for printing. Select this queue when you install the printer fonts.
- Custom queue
If the administrator has registered custom queues in the IS1000C / IS950C, queues that have been already registered will be displayed in the queue selection list. Output document data is processed in accordance with the queue settings registered by the administrator.

For details, refer to the separate manual, "Utility Guide".

11 Select the driver to be used.**◆ For Mac OS v10.6 or later**

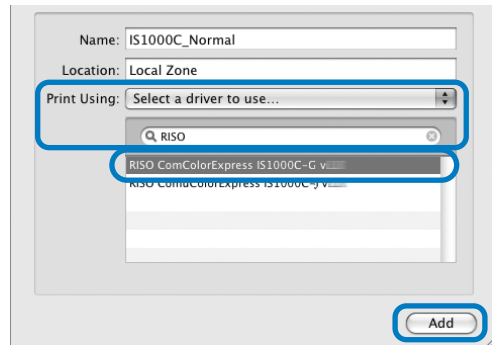
- 1) Select **[Select Printer Software...]** from **[Print Using]**.



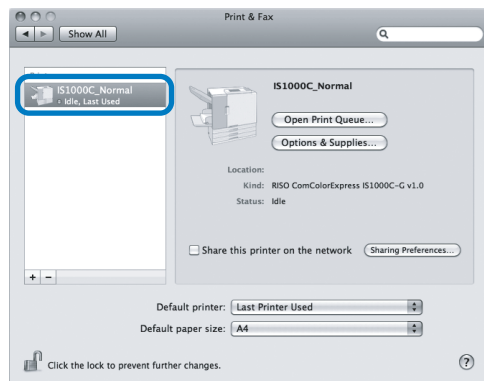
- 2) Select **[RISO ComColorExpress IS1000C-G v*.**]** or **[RISO ComColorExpress IS950C-G v*.**]** from the displayed list.
- 3) Click the **[OK]** button.
- 4) Click the **[Add]** button on the **[Add Printer]** window.

◆ For Mac OS v10.5

- 1) Select **[RISO]** from **[Print Using]**.
- 2) Select **[RISO ComColorExpress IS1000C-G v*.**]** or **[RISO ComColorExpress IS950C-G v*.**]** from Model.
- 3) Click the **[Add]** button.

**Note:**

- If an optional setting window appears, set the options connected to the printer.
- If you continue on to install a queue, perform the procedures from step 9.

12 Confirm that the queue selected at step 10 has been added to the dialog box.**13 Close the dialog box.**

This completes installation of the printer driver.

Uninstalling the RISO IS1000C / IS950C Software

Perform the following operations to delete (uninstall) the RISO IS1000C / IS950C Software and the printer driver.

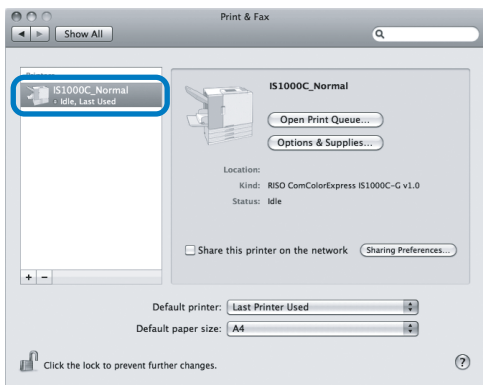
Note:

- If you have other software applications running, shut them down before uninstalling the software.

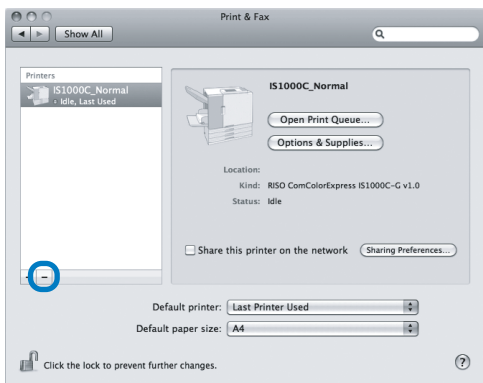
1 Open the Mac OS volume, and open the [Applications] - [System Preferences] folders.

2 Double-click [Printers & Scanners].
For Mac OS v10.5 / v10.6, double-click [Print & Fax].
For Mac OS v10.7 (Lion) / v10.8 (Mountain Lion), double-click [Print & Scan].

3 Select the printer to delete in the dialog box.



4 Click the [-] button.



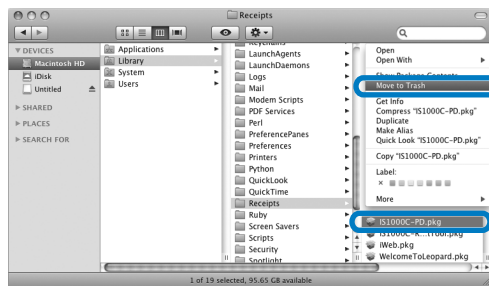
If multiple queues are installed for the IS1000C / IS950C, repeat the procedures from step 3 to step 4, and delete all of the printers (queues).

5 Close the dialog box.

For Mac OS v10.6 or later, go to Step 8.

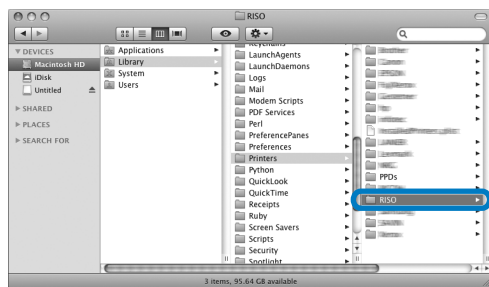
6 Open the Mac OS volume, and open the [Library] - [Receipts] folders.

7 Delete [IS1000C_IS950C-*.pkg].**

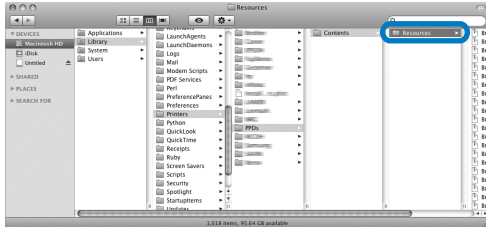


8 Open the Mac OS volume, and open the [Library] - [Printers] folders.

9 Delete the [RISO] folder.

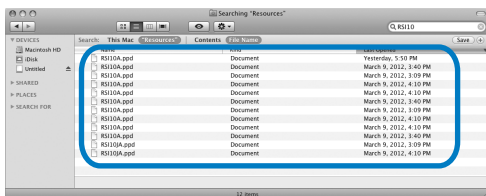


- 10** Open the Mac OS volume, and open the [Library] - [Printers] - [PPDs] - [Contents] - [Resources] folders.



- 11** Execute a search using a keyword of [RSI10] or [RSI95].

- 12** Delete the found [RSI10****.ppd] or [RSI95***.ppd] files.



- 13** Open the Mac OS volume, and open the [Users] - [(User name)] - [Library] - [Preferences] folders.

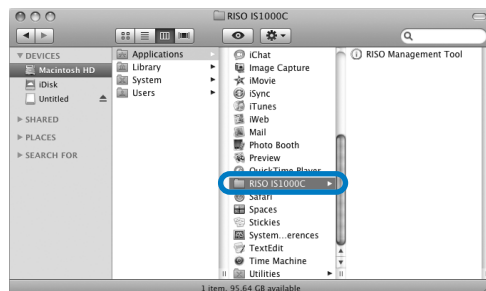
- 14** Delete [com.apple.print.custompapers.plist] and [com.apple.print.custompresets.plist].



These files do not exist if custom papers are not registered by the OS or if the print conditions are not configured in the printer driver. Delete these if they exist. Then, delete the RISO IS1000C / IS950C Software.

- 15** Open the Mac OS volume, and open the [Applications] folder.

- 16** Delete the [RISO IS1000C] or [RISO IS950C] folder.



This completes deletion of the RISO IS1000C / IS950C Software.

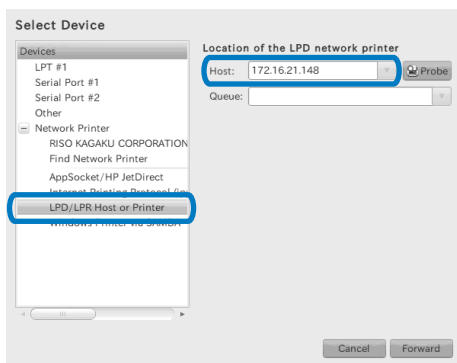
Installing on Linux

Registering the RISO IS1000C / IS950C Controller PPD in Linux

Note:

- Here, the explanation will use Linux Ubuntu (10.04).
- If you have other software applications running, shut them down before configuring the printer.

- 1 Turn on the printer and the IS1000C / IS950C controller.**
- 2 Configure the computer (Linux) Communication settings.**
- 3 Select [System]-[Administration]-[Printing] from the menu bar.**
The printing window is displayed.
- 4 Click the [Add] button.**
- 5 Select [LPD/LPR Host or Printer], and enter the IS1000C or IS950C controller's IP address for [Host:].**



- 6 If necessary, enter the queue (normal / hold) in lower-case alphabetic characters for [Queue:], and click the [Forward] button.**
- 7 At the driver selection screen, select [Provide PPD file] and then the [RSI10ENGA.ppd] file, and click the [Forward] button.**
- 8 Check the PPD version, and click the [Forward] button.**
- 9 Check the printer name, and click the [Apply] button.**
- 10 Perform a test print if necessary.**
Printer registration is completed, and an icon is displayed in the print window.

Uninstalling the Linux PPD

To delete (uninstall) the RISO IS1000C / IS950C PPD registered in Linux, perform the following operations.

Important!:

- Uninstallation requires administrator privileges.

Note:

- Here, the explanation will use Linux Ubuntu (10.04).
- If you have other software applications running, shut them down before performing uninstallation.

1 Select [System]-[Administration]-[Printing] in Linux.

The [Printing] screen is displayed.

2 Select the icon of the printer that you want to delete, right-click it, and select [Delete].



The uninstallation process begins.



When the icon disappears, the RISO IS1000C / IS950C PPD is deleted, and the uninstallation is complete.



Appendix

Troubleshooting

This describes how to handle problems during the printer driver and the software installation

Problem	Cause and Solution
Cannot install the RISO IS1000C / IS950C Software.	<ul style="list-style-type: none"> • <u>Installation does not start even if the CD-ROM is inserted in the computer.</u> The computer model or settings may not allow installation auto start. Double-click the "IS1000C_IS950C_Software_Package.exe" file on the CD-ROM.
The RISO Management Tool does not operate normally.	<ul style="list-style-type: none"> • <u>The RISO Management Tool is not properly installed.</u> See the pages below and reinstall the RISO Management Tool. <ul style="list-style-type: none"> – Windows "Communication settings" p.27 – Mac OS "Communication settings" p.35 • <u>The RISO Management Tool starts, but the printer information is not displayed.</u> <ul style="list-style-type: none"> – Click [Search] icon, and refresh the display information. – Confirm that the power is ON for the IS1000C / IS950C and printer. – Confirm that the IS1000C / IS950C and computer and the IS1000C / IS950C and printer are connected correctly. "Rear side" p.14, "Computer Connections" p.22
Cannot install the printer driver.	<ul style="list-style-type: none"> • <u>The IP address for the IS1000C / IS950C has not been set.</u> See the pages below and assign an IP address to the IS1000C / IS950C. <ul style="list-style-type: none"> – Windows "Communication settings" p.27 – Mac OS "Communication settings" p.35 • <u>Incorrect IP address is set.</u> The IP Address entered by the RISO Management Tool is incorrect. Enter the correct IP address.
"Ex.CI is not connected." is displayed on the [Status] - [General] screen of the printer's touch panel.	<ul style="list-style-type: none"> • <u>The IS1000C / IS950C is not running.</u> Press the power switch on the IS1000C / IS950C to turn it on. • <u>The IS1000C / IS950C and printer are not connected correctly.</u> Firmly connect the LAN cable that is connected to the printer to the upper connector on the rear of the IS1000C / IS950C. "Rear side" p.14 • <u>The IP address used to connect to the network and the IP address used to connect to the printer are the same.</u> The IS1000C / IS950C has an IP address setting that is used for the network connection, as well as an IP address setting that is used for printer connection. If these two addresses are the same, a connection failure may occur. From the [Communication Settings] screen of the IS1000C / IS950C Console, confirm that the IP address set for [IP address] (the address used for the network connection) and the IP address for [Engine IP Configuration] are not the same; if they are the same, change one of the settings. For details, refer to the separate manual, "Utility Guide".

Font Sample Page

Printer Name: IS1000C
Serial Number:Model: RISO IS1000CG
Version:

Page: 3

HoeflerText-Regular	The quick brown fox jumps over the lazy dog
JoannaMT	The quick brown fox jumps over the lazy dog
JoannaMT-Bold	The quick brown fox jumps over the lazy dog
JoannaMT-BoldItalic	<i>The quick brown fox jumps over the lazy dog</i>
JoannaMT-Italic	<i>The quick brown fox jumps over the lazy dog</i>
LetterGothic	The quick brown fox jumps over the lazy dog
LetterGothic-Bold	The quick brown fox jumps over the lazy dog
LetterGothic-BoldSlanted	<i>The quick brown fox jumps over the lazy dog</i>
LetterGothic-Slanted	<i>The quick brown fox jumps over the lazy dog</i>
LubalinGraph-Book	The quick brown fox jumps over the lazy dog
LubalinGraph-BookOblique	<i>The quick brown fox jumps over the lazy dog</i>
LubalinGraph-Demi	The quick brown fox jumps over the lazy dog
LubalinGraph-DemiOblique	<i>The quick brown fox jumps over the lazy dog</i>
Marigold	<i>The quick brown fox jumps over the lazy dog</i>
Monalisa-Recut	The quick brown fox jumps over the lazy dog
Monaco	The quick brown fox jumps over the lazy dog
NewCenturySchlbk-Bold	The quick brown fox jumps over the lazy dog
NewCenturySchlbk-BoldItalic	<i>The quick brown fox jumps over the lazy dog</i>
NewCenturySchlbk-Italic	<i>The quick brown fox jumps over the lazy dog</i>
NewCenturySchlbk-Roman	The quick brown fox jumps over the lazy dog
NewYork	The quick brown fox jumps over the lazy dog
Optima	The quick brown fox jumps over the lazy dog
Optima-Bold	The quick brown fox jumps over the lazy dog
Optima-BoldItalic	<i>The quick brown fox jumps over the lazy dog</i>
Optima-Italic	<i>The quick brown fox jumps over the lazy dog</i>
Oxford	<i>The quick brown fox jumps over the lazy dog</i>
Palatino-Bold	The quick brown fox jumps over the lazy dog
Palatino-BoldItalic	<i>The quick brown fox jumps over the lazy dog</i>
Palatino-Italic	<i>The quick brown fox jumps over the lazy dog</i>
Palatino-Roman	The quick brown fox jumps over the lazy dog
StempelGaramond-Bold	The quick brown fox jumps over the lazy dog
StempelGaramond-BoldItalic	<i>The quick brown fox jumps over the lazy dog</i>
StempelGaramond-Italic	<i>The quick brown fox jumps over the lazy dog</i>
StempelGaramond-Roman	The quick brown fox jumps over the lazy dog
Symbol	Τηρ θυιχκ βροων φοξ φυμπσ σμερ τηρ λαζψ δογ
Tekton	The quick brown fox jumps over the lazy dog
Times-Bold	The quick brown fox jumps over the lazy dog
Times-BoldItalic	<i>The quick brown fox jumps over the lazy dog</i>
Times-Italic	<i>The quick brown fox jumps over the lazy dog</i>
Times-Roman	The quick brown fox jumps over the lazy dog
TimesNewRomanPS-BoldItalicMT	<i>The quick brown fox jumps over the lazy dog</i>
TimesNewRomanPS-BoldMT	The quick brown fox jumps over the lazy dog
TimesNewRomanPS-ItalicMT	<i>The quick brown fox jumps over the lazy dog</i>
TimesNewRomanPSMT	The quick brown fox jumps over the lazy dog
Univers	The quick brown fox jumps over the lazy dog
Univers-Bold	The quick brown fox jumps over the lazy dog
Univers-BoldExt	The quick brown fox jumps over the lazy dog
Univers-BoldExtObli	<i>The quick brown fox jumps over the lazy dog</i>
Univers-BoldOblique	<i>The quick brown fox jumps over the lazy dog</i>
Univers-Condensed	The quick brown fox jumps over the lazy dog

PCL Font Sample Page

Rom Fonts

Printer Name: IS1000C
Version:Serial Number:
PCL Fonts: 80 (ROM) / 0 (Soft)

Albertus Extra Bold
 <esc>(8U<esc>(slp12v0s4b4362T
 Albertus Medium
 <esc>(8U<esc>(slp12v0s1b4362T
 Antique Olive
 <esc>(8U<esc>(slp12v0s0b4168T
 Antique Olive Bold
 <esc>(8U<esc>(slp12v0s3b4168T
 Antique Olive Italic
 <esc>(8U<esc>(slp12v1s0b4168T
 Arial
 <esc>(8U<esc>(slp12v0s0b16602T
 Arial Bold
 <esc>(8U<esc>(slp12v0s3b16602T
 Arial Bold Italic
 <esc>(8U<esc>(slp12v1s3b16602T
 Arial Italic
 <esc>(8U<esc>(slp12v1s0b16602T
 AvantGarde-Book
 <esc>(8U<esc>(slp12v0s0b24607T
 AvantGarde-BookOblique
 <esc>(8U<esc>(slp12v1s0b24607T
 AvantGarde-Demi
 <esc>(8U<esc>(slp12v0s2b24607T
 AvantGarde-DemiOblique
 <esc>(8U<esc>(slp12v1s2b24607T
 Bookman-Demi
 <esc>(8U<esc>(slp12v0s2b24623T
 Bookman-DemiItalic
 <esc>(8U<esc>(slp12v1s2b24623T
 Bookman-Light
 <esc>(8U<esc>(slp12v0s-3b24623T
 Bookman-LightItalic
 <esc>(8U<esc>(slp12v1s-3b24623T
 CG Omega
 <esc>(8U<esc>(slp12v0s0b4113T
 CG Omega Bold
 <esc>(8U<esc>(slp12v0s3b4113T
 CG Omega Bold Italic
 <esc>(8U<esc>(slp12v1s3b4113T
 CG Omega Italic
 <esc>(8U<esc>(slp12v1s0b4113T
 CG Times
 <esc>(8U<esc>(slp12v0s0b4101T
 CG Times Bold
 <esc>(8U<esc>(slp12v0s3b4101T
 CG Times Bold Italic
 <esc>(8U<esc>(slp12v1s3b4101T
 CG Times Italic
 <esc>(8U<esc>(slp12v1s0b4101T
 Clarendon Condensed Bold
 <esc>(8U<esc>(slp12v4s3b4140T
 Coronet
 <esc>(8U<esc>(slp12v1s0b4116T
 Courier
 <esc>(8U<esc>(s0p12h0s0b4099T

The quick brown fox jumps over the lazy dog. 1234567890

The quick brown fox jumps over the lazy dog. 1234567890

The quick brown fox jumps over the lazy dog. 1234567890

The quick brown fox jumps over the lazy dog. 12345678*The quick brown fox jumps over the lazy dog. 1234567890*

The quick brown fox jumps over the lazy dog. 1234567890

The quick brown fox jumps over the lazy dog. 1234567890***The quick brown fox jumps over the lazy dog. 1234567890****The quick brown fox jumps over the lazy dog. 1234567890*

The quick brown fox jumps over the lazy dog. 1234567890

*The quick brown fox jumps over the lazy dog. 1234567890***The quick brown fox jumps over the lazy dog. 1234567890*****The quick brown fox jumps over the lazy dog. 1234567890*****The quick brown fox jumps over the lazy dog. 1234567890*****The quick brown fox jumps over the lazy dog. 1234567890***

The quick brown fox jumps over the lazy dog. 1234567890

The quick brown fox jumps over the lazy dog. 1234567890

The quick brown fox jumps over the lazy dog. 1234567890

The quick brown fox jumps over the lazy dog. 1234567890***The quick brown fox jumps over the lazy dog. 1234567890****The quick brown fox jumps over the lazy dog. 1234567890*

The quick brown fox jumps over the lazy dog. 1234567890

The quick brown fox jumps over the lazy dog. 1234567890***The quick brown fox jumps over the lazy dog. 1234567890****The quick brown fox jumps over the lazy dog. 1234567890***The quick brown fox jumps over the lazy dog. 1234567890***The quick brown fox jumps over the lazy dog. 1234567890*

The quick brown fox jumps over the lazy dog. 1234567890

PCL Font Sample Page

Rom Fonts

Printer Name: IS1000C
Version:Serial Number:
PCL Fonts: 80 (ROM) / 0 (Soft)

Courier Bold <esc>(8U<esc>(s0p12h0s3b4099T	The quick brown fox jumps over the lazy dog. 1234567890
Courier Bold Italic <esc>(8U<esc>(s0p12h1s3b4099T	<i>The quick brown fox jumps over the lazy dog. 1234567890</i>
Courier Italic <esc>(8U<esc>(s0p12h1s0b4099T	<i>The quick brown fox jumps over the lazy dog. 1234567890</i>
CourierPS <esc>(8U<esc>(s0p12h0s0b24579T	The quick brown fox jumps over the lazy dog. 1234567890
CourierPS-Bold <esc>(8U<esc>(s0p12h0s3b24579T	The quick brown fox jumps over the lazy dog. 1234567890
CourierPS-BoldOblique <esc>(8U<esc>(s0p12h1s3b24579T	<i>The quick brown fox jumps over the lazy dog. 1234567890</i>
CourierPS-Oblique <esc>(8U<esc>(s0p12h1s0b24579T	<i>The quick brown fox jumps over the lazy dog. 1234567890</i>
Garamond Antiqua <esc>(8U<esc>(slp12v0s0b4197T	The quick brown fox jumps over the lazy dog. 1234567890
Garamond Halbfett <esc>(8U<esc>(slp12v0s3b4197T	The quick brown fox jumps over the lazy dog. 1234567890
Garamond Kursiv <esc>(8U<esc>(slp12v1s0b4197T	<i>The quick brown fox jumps over the lazy dog. 1234567890</i>
Garamond Kursiv Halbfett <esc>(8U<esc>(slp12v1s3b4197T	<i>The quick brown fox jumps over the lazy dog. 1234567890</i>
Helvetica <esc>(8U<esc>(slp12v0s0b24580T	The quick brown fox jumps over the lazy dog. 1234567890
Helvetica-Bold <esc>(8U<esc>(slp12v0s3b24580T	The quick brown fox jumps over the lazy dog. 1234567890
Helvetica-BoldOblique <esc>(8U<esc>(slp12v1s3b24580T	<i>The quick brown fox jumps over the lazy dog. 1234567890</i>
Helvetica-Narrow <esc>(8U<esc>(slp12v4s0b24580T	The quick brown fox jumps over the lazy dog. 1234567890
Helvetica-Narrow-Bold <esc>(8U<esc>(slp12v4s3b24580T	The quick brown fox jumps over the lazy dog. 1234567890
Helvetica-Narrow-BoldOblique <esc>(8U<esc>(slp12v5s3b24580T	<i>The quick brown fox jumps over the lazy dog. 1234567890</i>
Helvetica-Narrow-Oblique <esc>(8U<esc>(slp12v5s0b24580T	<i>The quick brown fox jumps over the lazy dog. 1234567890</i>
Helvetica-Oblique <esc>(8U<esc>(slp12v1s0b24580T	<i>The quick brown fox jumps over the lazy dog. 1234567890</i>
Letter Gothic <esc>(8U<esc>(s0p12h0s0b4102T	The quick brown fox jumps over the lazy dog. 1234567890
Letter Gothic Bold <esc>(8U<esc>(s0p12h0s3b4102T	The quick brown fox jumps over the lazy dog. 1234567890
Letter Gothic Italic <esc>(8U<esc>(s0p12h1s0b4102T	<i>The quick brown fox jumps over the lazy dog. 1234567890</i>
Marigold <esc>(8U<esc>(slp12v0s0b4297T	<i>The quick brown fox jumps over the lazy dog. 1234567890</i>
NewCenturySchlbk-Bold <esc>(8U<esc>(slp12v0s3b24703T	The quick brown fox jumps over the lazy dog. 1234567890
NewCenturySchlbk-BoldItalic <esc>(8U<esc>(slp12v1s3b24703T	<i>The quick brown fox jumps over the lazy dog. 1234567890</i>
NewCenturySchlbk-Italic <esc>(8U<esc>(slp12v1s0b24703T	<i>The quick brown fox jumps over the lazy dog. 1234567890</i>
NewCenturySchlbk-Roman <esc>(8U<esc>(slp12v0s0b24703T	The quick brown fox jumps over the lazy dog. 1234567890
Palatino-Bold <esc>(8U<esc>(slp12v0s3b24591T	The quick brown fox jumps over the lazy dog. 1234567890

PCL Font Sample Page

Rom Fonts

Printer Name: IS1000C
Version:Serial Number:
PCL Fonts: 80 (ROM) / 0 (Soft)

Palatino-BoldItalic
<esc>(8U<esc>(slp12v1s3b24591T
Palatino-Italic
<esc>(8U<esc>(slp12v1s0b24591T
Palatino-Roman
<esc>(8U<esc>(slp12v0s0b24591T
Symbol
<esc>(8U<esc>(slp12v0s0b16686T
Symbol
<esc>(8U<esc>(slp12v0s0b45358T
Times New Roman
<esc>(8U<esc>(slp12v0s0b16901T
Times New Roman Bold
<esc>(8U<esc>(slp12v0s3b16901T
Times New Roman Bold Italic
<esc>(8U<esc>(slp12v1s3b16901T
Times New Roman Italic
<esc>(8U<esc>(slp12v1s0b16901T
Times-Bold
<esc>(8U<esc>(slp12v0s3b25093T
Times-BoldItalic
<esc>(8U<esc>(slp12v1s3b25093T
Times-Italic
<esc>(8U<esc>(slp12v1s0b25093T
Times-Roman
<esc>(8U<esc>(slp12v0s0b25093T
Univers Bold
<esc>(8U<esc>(slp12v0s3b4148T
Univers Bold Italic
<esc>(8U<esc>(slp12v1s3b4148T
Univers Condensed Bold
<esc>(8U<esc>(slp12v4s3b4148T
Univers Condensed Bold Italic
<esc>(8U<esc>(slp12v5s3b4148T
Univers Condensed Medium
<esc>(8U<esc>(slp12v4s0b4148T
Univers Condensed Medium Italic
<esc>(8U<esc>(slp12v5s0b4148T
Univers Medium
<esc>(8U<esc>(slp12v0s0b4148T
Univers Medium Italic
<esc>(8U<esc>(slp12v1s0b4148T
Wingdings
<esc>(8U<esc>(slp12v0s0b31402T
ZapfChancery-MediumItalic
<esc>(8U<esc>(slp12v1s0b45099T
ZapfDingbats
<esc>(8U<esc>(slp12v0s0b45101T

*The quick brown fox jumps over the lazy dog. 1234567890**The quick brown fox jumps over the lazy dog. 1234567890*

The quick brown fox jumps over the lazy dog. 1234567890

Τηθ ϑυιχκ βροων φοξ φυμπσ οσερ τη λαζψ δογ. 1234567890

Τηθ ϑυιχκ βροων φοξ φυμπσ οσερ τη λαζψ δογ. 1234567890

The quick brown fox jumps over the lazy dog. 1234567890

The quick brown fox jumps over the lazy dog. 1234567890***The quick brown fox jumps over the lazy dog. 1234567890****The quick brown fox jumps over the lazy dog. 1234567890***The quick brown fox jumps over the lazy dog. 1234567890*****The quick brown fox jumps over the lazy dog. 1234567890****The quick brown fox jumps over the lazy dog. 1234567890*

The quick brown fox jumps over the lazy dog. 1234567890

The quick brown fox jumps over the lazy dog. 1234567890***The quick brown fox jumps over the lazy dog. 1234567890*****The quick brown fox jumps over the lazy dog. 1234567890*****The quick brown fox jumps over the lazy dog. 1234567890***

The quick brown fox jumps over the lazy dog. 1234567890

The quick brown fox jumps over the lazy dog. 1234567890

The quick brown fox jumps over the lazy dog. 1234567890

The quick brown fox jumps over the lazy dog. 1234567890

⌘⌘⌘ ⓀⓁⓂⓃⓄⓅⓆⓇⓈⓉ ⓊⓋⓌⓍⓎⓏⓐⓑⓓⓔⓕⓖⓗⓘⓙⓜⓝⓞⓟⓠⓡⓢⓣⓤⓥⓦⓧⓨⓩ⓪⓫⓬⓭⓮⓯⓰⓱⓲⓳⓴⓵⓶⓷⓸⓹⓺⓻⓼⓽⓾⓿

The quick brown fox jumps over the lazy dog. 1234567890

!! ⓀⓁⓂⓃⓄⓅⓆⓇⓈⓉ ⓊⓋⓌⓍⓎⓏⓐⓑⓓⓔⓕⓖⓗⓘⓙⓜⓝⓞⓟⓠⓡⓢⓣⓤⓥⓦⓧⓨⓩ⓪⓫⓬⓭⓮⓯⓰⓱⓲⓳⓴⓵⓶⓷⓸⓹⓺⓻⓼⓽⓾⓿



Hinweise zur Sicherheit und Behandlung (Du)

Vorwort

Willkommen zur Welt dieses Produkts!

Diese Einheit ist ein Kontrollgerät mit Hochleistungsinterpreter und Unterstützung für Netzwerk und PostScript®3.

Diese Einheit ermöglicht das Ausführen verschiedener Funktionen, wie z.B. Datenausgabe und Druckerüberwachung von Windows- und Macintosh-Computern.

Vor Inbetriebnahme der Einheit lesen Sie bitte diese Anleitung durch. Bewahren Sie sie nach den Lesen zur zukünftigen Bezugnahme auf.

Maschinenlärminformationsverordnung 3. GPSGV: Der höchste Schalldruckpegel beträgt 70dB(A) oder weniger gemäß EN ISO 7779.

Hinweis: Das Gerät ist nicht für die Benutzung am Bildschirmarbeitsplatz gemäss Bildscharb V vorgesehen.

Aufbau der Handbücher

Für das vorliegende Produkt stehen 3 Handbücher zur Verfügung.

- "Setup Guide" (vorliegendes Handbuch)
Dieses Handbuch beschreibt das Vorgehen beim Anschließen des IS1000C / IS950C und die Installation der Software, die mit dem Produkt mitgeliefert wurde.
- "Printer Driver Guide"
Dieses Handbuch beschreibt die speziellen Funktionen und das Setup-Verfahren des Druckertreibers.
- "Utility Guide"
Dieses Handbuch beschreibt die Funktionen des Kontrollgeräts zur Verwaltung und Statusüberwachung dieses Produkts über ein Netzwerk und die Betriebsverfahren der mitgelieferten Software.

Lesen Sie jedes Handbuch vor Inbetriebnahme dieses Produkts oder wenn Sie während der Benutzung auf Fragen oder Probleme stoßen.

Inhalt der Handbücher

Hinweise

- 1) Die unerlaubte Vervielfältigung dieses Handbuchs oder von Teilen davon ist strengstens untersagt.
- 2) Da wir bemüht sind, das Produkt ständig zu verbessern und weiterzuentwickeln, kann sich der Inhalt des Handbuchs jederzeit und ohne vorherige Ankündigung ändern.
- 3) RISO übernimmt keine Haftung für Folgeschäden, die aus der Nutzung dieses Handbuchs oder dem Betrieb dieses Produkts resultieren.
- 4) Die Abbildungen in diesem Dokument zeigen in den meisten Fällen das IS1000C Modell.

Warenzeichen

RISO und RISORINC sind Marken oder eingetragene Marken der RISO KAGAKU CORPORATION in den Vereinigten Staaten und anderen Ländern.

Adobe, AdobePS, PostScript, PostScript3 und PostScript logo sind Warenzeichen bzw. registrierte Warenzeichen von Adobe Systems Incorporated in den Vereinigten Staaten und/oder anderen Ländern.

AppleTalk, Macintosh und Mac OS sind Warenzeichen von Apple Inc.

Windows, Windows Vista und Windows Server sind entweder eingetragene Marken oder Marken der Microsoft Corporation in den Vereinigten Staaten und/oder anderen Ländern.

Andere Firmennamen und/oder Marken sind entweder eingetragene Marken oder Marken der entsprechenden Firmen.

Urheberrecht © 2017 RISO KAGAKU CORPORATION



RISO Kagaku Corporation London Office, 610 Centennial Park, Centennial Avenue, Elstree, Herts, WD6 3TJ U.K.

Sicherheitsvorkehrungen


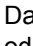


Dieser Abschnitt beschreibt Vorkehrungen, die zur sicheren Benutzung dieser Maschine befolgt werden müssen. Bitte lesen Sie diesen Abschnitt gut durch.

Warnungssymbole

Damit diese Maschine richtig betrieben wird und Verletzungen sowie Sachschaden vermieden werden, kommen die folgende Warnungssymbole zur Anwendung. Lernen Sie zuerst die Bedeutung der Symbole, und lesen Sie danach die Anleitung.

 WARNUNG:	Dieses Symbol bedeutet, dass unrichtige Handhabung bzw. Ignorieren des Symbols zum Tod oder schweren Verletzungen führen kann.
 Vorsicht:	Dieses Symbol bedeutet, dass unrichtige Handhabung bzw. Ignorieren des Symbols zu Verletzungen oder Sachschaden führen kann.

Beispiele der Symbole

	Das Symbol  zeigt eine verbotene Aktion an. Ein konkretes, verbotenes Vorgehen wird im Symbol oder nahebei angegeben. (Die linke Abbildung zeigt das Verbot des Zerlegens.)
	Das Symbol  zeigt eine zwangsmäßige Aktion oder einen Anleitungshinweis an. Ein konkreter Hinweis ist im Symbol angegeben. (Die linke Abbildung zeigt einen Hinweis zum Herausziehen des Netzstecker an.)


Aufstellungsort

Vorsicht:

- Stellen Sie die Maschine auf einer ebenen, stabilen Oberfläche auf. Andernfalls könnte sich die Maschine neigen und hinunterfallen und dabei Verletzungen verursachen.
- Die Maschine besitzt Belüftungslöcher. Installieren Sie die Maschine mindestens 150 mm von einer Wand weg. Falls die Belüftungslöcher verdeckt werden und keine Wärme abgestrahlt wird, könnte ein Brand entstehen.
- Stellen Sie die Maschine nicht an einem staubhaltigen oder feuchten Ort auf. Andernfalls könnte ein Brand oder elektrische Schläge auftreten.
- Stellen Sie die Einheit nicht an einem Ort auf, wo sie einem Wasserleck oder Spritzern ausgesetzt sein kann. Dringt Wasser ins Innere der Einheit ein, kann ein Brand sowie elektrische Schläge verursacht werden.

Spannungsanschluss

WARNUNG:

- Installieren Sie die Spannungsversorgung wie vorgeschrieben. Andernfalls kann ein Brand oder elektrische Schläge auftreten.
- Das Gerät in der Nähe einer Wandsteckdose installieren, um zu vermeiden, dass ein Verlängerungskabel zwischen dem Gerät und der Wandsteckdose verwendet werden muss. Wenn die Verwendung eines Verlängerungskabels unumgänglich ist, darf das Kabel nicht länger als 5 m sein. Bei Nichtbeachtung besteht die Gefahr eines Brandes oder elektrische Schläge.
- Das Spannungskabel darf weder beschädigt noch abgeändert werden. Werden schwere Gegenstände auf das Kabel gestellt, oder falls an diesem gezogen bzw. falls es geknickt wird, kann es Schaden erleiden, was in einem Brand bzw. elektrischen Schlägen resultieren kann. 
- Das mitgelieferte Spannungskabel kann nur für diese Maschine verwendet werden. Verwenden Sie es nicht mit anderen Produkten. Ein Brand oder elektrische Schläge könnten auftreten.
- Niemals das Kabel mit nassen Händen aus der Steckdose ziehen. Andernfalls könnten es einen elektrischen Schlag geben.

Vorsicht:

- Schließen Sie Spannungs- und Schnittstellenkabel gut an. Eine lose Verbindung kann zu einem Kontaktfehler führen und einen Brand verursachen.
- Kein beschädigtes Spannungskabel verwenden. Ersetzen Sie ein schadhaftes Spannungskabel durch eines, das dieselben Nennwerte besitzt. Kontaktieren Sie Ihre Servicestelle für Ersatz.
- Nie zum Herausziehen des Steckers am Kabel anfassen. Andernfalls kann es beschädigt werden und einen Brand oder elektrische Schläge verursachen. Zum Abtrennen des Kabels immer nur am Stecker anfassen.
- Falls die Maschine für längere Zeit nicht gebraucht wird, wie z.B. über mehrere Feiertage oder Ferientage, dann sollte das Spannungskabel jeweils sicherheitshalber aus der Steckdose gezogen werden.
- Ziehen Sie den Stecker mehr als einmal pro Jahr aus der Steckdose und reinigen Sie seine Polstifte und ihre Umgebung. Staub, der sich an dieser Stelle angesammelt hat, könnte einen Brand verursachen.





Anschluss des Schnittstellenkabels

Vorsicht:


- Als Schnittstellenkabel darf nur ein durch unsere Firma spezifiziertes Kabel verwendet werden; schließen Sie es jeweils erst nach Überprüfung des Anschlussgeräts und Anschlusses an. Wird ein Kabel verwendet, das nicht den Spezifikationen entspricht, oder wird das Kabel an einem falschen Gerät angeschlossen, dann kann ein Brand entstehen.
- Vermeiden Sie das Beschädigen bzw. Knicken des Schnittstellenkabels und treten Sie nicht darauf. Die Einheit darf nicht betrieben werden, wenn ein schwerer Gegenstand auf dem Kabel steht oder die Verbindung lose ist. Ein Brand könnte entstehen.

Behandlung

WARNUNG:

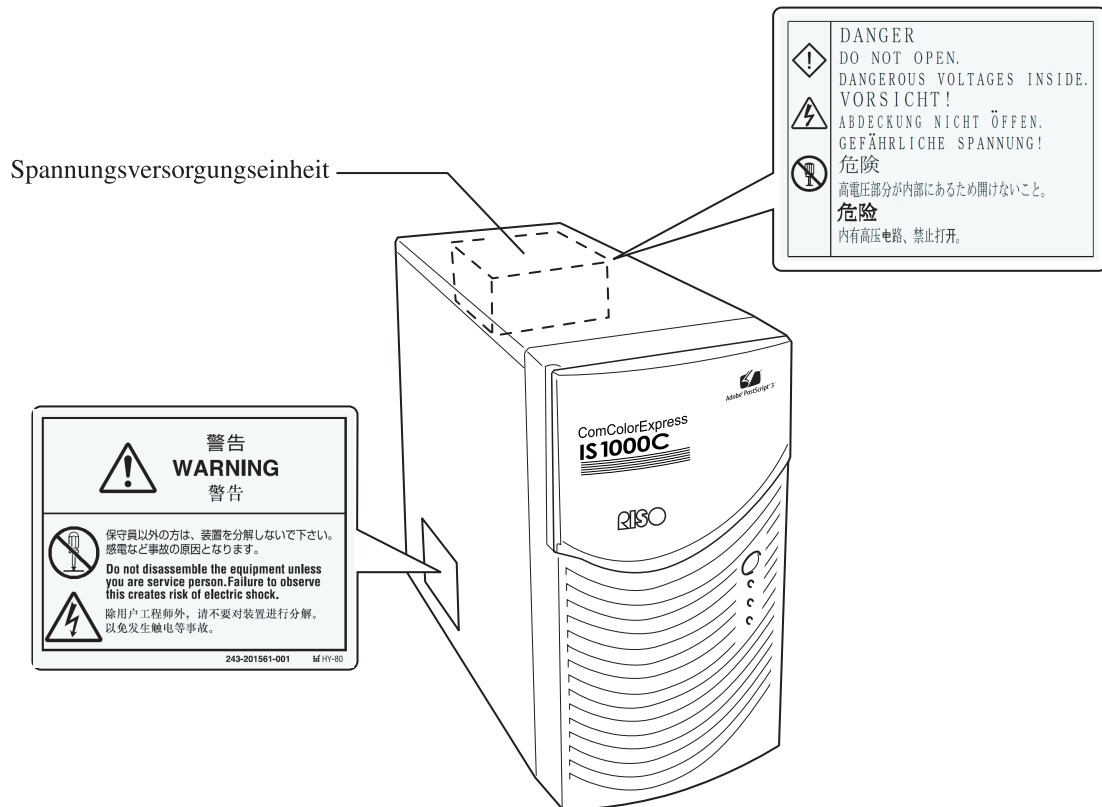
- Stellen Sie keine Wassergefäße oder Metallobjekte auf die Maschine. Falls Wasser oder ein Metallobjekt ins Innere eindringt, kann dies zu einem Brand oder elektrischen Schlägen führen.
- Stellen Sie keine offenen Feuerquellen, wie z. B. eine Kerze, auf die Einheit.
- Lassen Sie keinerlei metallische Materialien oder brennbare Substanzen durch eine Öffnung ins Innere der Maschine eindringen. Ein Brand oder elektrische Schläge können entstehen.
- Entfernen Sie die Abdeckungen nicht. Andernfalls können Sie aufgrund der Hochspannung im Innern elektrischen Schlägen ausgesetzt sein.
- Sie sollten die Maschine nie zerlegen oder selbst zusammenbauen. Andernfalls kann ein Brand oder elektrische Schläge auftreten. 
- Falls die Maschine übermäßige Hitze entwickelt, Rauch entwickelt oder einen abnormalen Geruch von sich gibt, schalten Sie sofort die Spannung aus, trennen Sie das Kabel von der Netzsteckdose und benachrichtigen Sie die Servicestelle, da sonst ein Brand oder elektrische Schläge entstehen können. 
- Falls etwas ins Innere der Maschine eingedrungen ist, schalten Sie sofort den Spannungsschalter aus, trennen Sie das Kabel von der Netzsteckdose und wenden Sie sich an die Servicestelle. Falls Sie die Maschine weiter benutzen, dann könnte ein Brand oder elektrische Schläge verursacht werden. 
- Entfernen Sie nie die Lithiumbatterie aus der Einheit. Wird die Lithiumbatterie in die Nähe von Feuer oder Wasser gelegt, könnte sie explodieren. Arbeitet die Einheit wegen der abgelaufenen Lithiumbatterie nicht richtig, dann wenden Sie sich an Ihre Servicestelle. 

Vorsicht:

- Wenn Sie die Maschine an einen anderen Ort verlegen, trennen Sie das Kabel von der Netzsteckdose und ziehen Sie alle möglichen verbundenen Kabel heraus. Falls Sie versuchen die Maschine unter Kraftanwendung zu transportieren, kann sie umkippen und zu Verletzungen führen.
- Besteht die Möglichkeit eines Blitzschlags, dann trennen Sie das Kabel von der Netzsteckdose. Donnergewitter vermeiden. Vor dem Herausziehen des Spannungssteckers, berühren Sie weder die Einheit noch das Kabel. Es besteht die Gefahr eines Brandes oder elektrischen Schlags. 

Warnetiketten

Die folgenden Warnetiketten sind an der Einheit angebracht, um einen sicheren Betrieb zu gewährleisten. Lesen Sie die Hinweise zum sicheren Betrieb sorgfältig. Entfernen oder verschmutzen Sie die Etiketten niemals. Falls die Etiketten nicht angeklebt sind oder wegzufallen scheinen, bzw. wenn sie wegen Verschmutzung nicht gelesen werden können, dann kontaktieren Sie die Servicestelle.



Vor Inbetriebnahme

Dieser Abschnitt erläutert Vorsichtsmaßnahmen, die bei der Benutzung der Maschine zu beachten sind.

Aufstellungsort

Nehmen Sie folgendes zur Kenntnis.

- Der Aufstellungsort zur Installation der Maschine wird bei der Lieferung aufgrund einer Absprache mit dem Kunden festgelegt.
- Vermeiden Sie die Installation der Maschine an den folgenden Orten. Nichtbeachtung dieser Vorsichtsmaßnahme kann zu einer Störung oder Körperverletzungen führen.
 - Orte, die direkter Sonnebestrahlung ausgesetzt sind oder helle Orte, die nahe bei Fenstern sind. (Falls keine Wahl besteht, versehen Sie das Fenster mit einem Vorhang.)
 - Orte, die plötzlichen Temperaturschwankungen ausgesetzt sind.
 - Sehr heiße und feuchte bzw. kalte und trockene Orte
 - Beheizte Stellen oder Orte, die direkt Kalt- oder Heißluft bzw. indirekt abgestrahlter Wärme ausgesetzt sind
 - Schlecht belüftet Orte
 - Staubhaltige Orte
 - Orte, die häufig Vibrationen ausgesetzt sind



Behandlung der Maschine

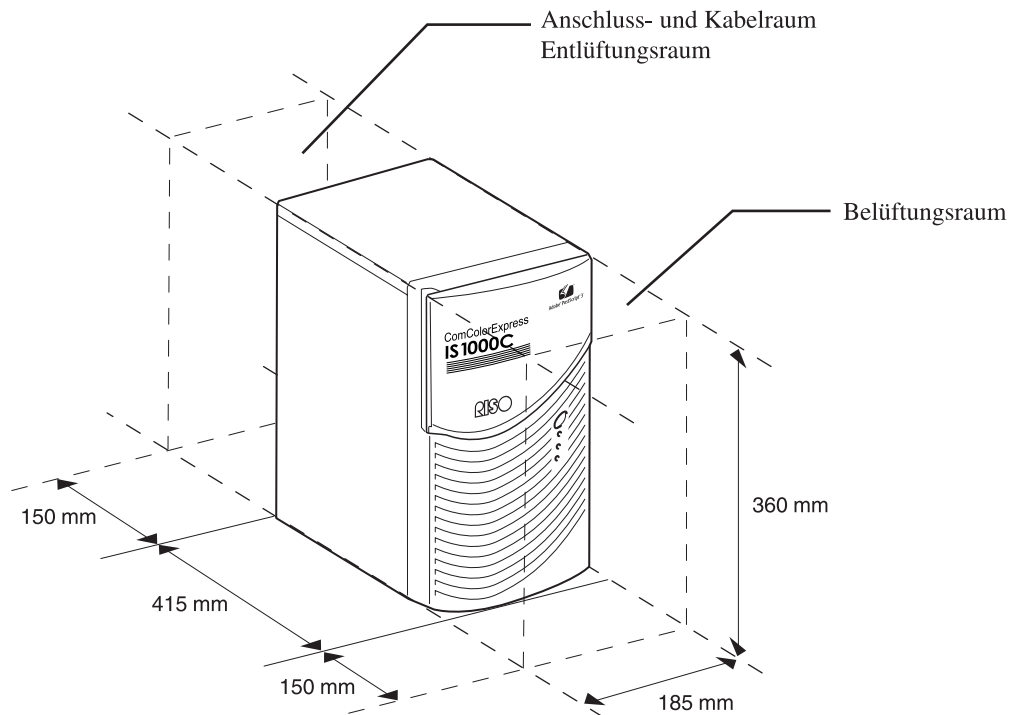
- Während des Betriebs darf der Hauptschalter nicht ausgeschaltet bzw. das Netzkabel herausgezogen werden.
- Die Einheit enthält Präzisionsteile. Behandeln Sie sie nicht anders als in dieser Anleitung beschrieben.
- Stellen oder legen Sie keine schweren Gegenstände auf die Maschine und setzen Sie sie keinen Schlägen aus.
- Wenn der Hauptschalter der Maschine aus- und dann wieder eingeschaltet wird, warten Sie mehr als 10 Sekunden vor dem Einschalten.
- Wenn ein Kabel oder Peripheriegerät angeschlossen oder abgetrennt wird, stellen Sie jeweils zuerst sicher, dass die Spannung dieser Einheit ausgeschaltet ist, und ziehen Sie das Netzkabel im Vor herein heraus.
- Zum Transportieren dieser Einheit ist der Spannungsschalter im Voraus auszuschalten und das Netzkabel abzutrennen.
- Verwenden Sie kein Handy bzw. Mikrofunktelefon oder einen Pager nahe der Einheit, da deren Radiowellen sonst eine Störung verursachen können. Schalten Sie Handys, Mikrofunktelefone und Pager in der Nähe des Geräts ab.
- Eine plötzliche Temperaturschwankung kann zu Kondenswasser im Innern der Einheit und zu einer Störung führen. Wenn die Einheit von einem kalten an einen warmen Ort gebracht wird, kann leicht Kondensniederschlag entstehen. Lassen Sie die Einheit eine Weile stehen, damit sie sich der Temperatur angleichen kann, bevor die Einheit in Betrieb genommen wird.
- Ein momentaner Spannungsabfall aufgrund eines Blitzschlags usw. kann eine Störung der Einheit verursachen. Zum Schutz gegen momentare Spannungsabfälle sollte eine ununterbrechbare Spannungsversorgung für die Netzspannung o.ä. verwendet werden.

Betriebsumgebung

- Die richtigen Betriebsbedingungen sind unten angegeben.
 - Temperaturbereich: 5°C - 35°C
 - Feuchtigkeitsbereich: 20% - 80% (kondensationsfrei)

Gesamtabmessungen

Es ist genug freier Raum zur Belüftung bzw. Entlüftung notwendig.



Transfer der Einheit

Wenn die Einheit einer Drittpartei übergeben (oder verkauft) wird, müssen Sie folgende Sicherheitsanforderungen erfüllen.

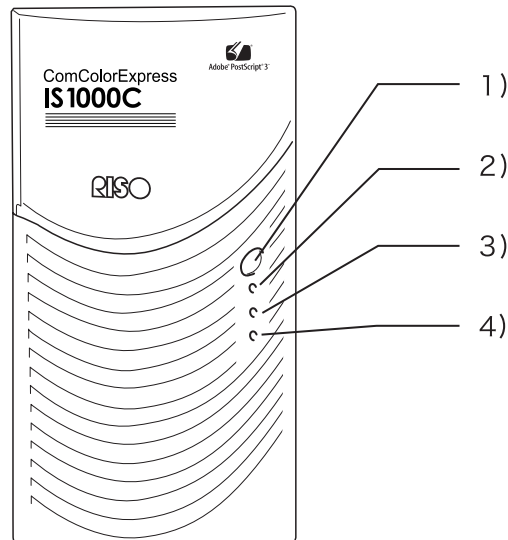
- 1) Übergeben Sie alle Beilagen, die mit dieser Einheit gekommen sind, einschließlich dieser Anleitung, und behalten Sie keine Kopien.
- 2) Die Anforderungen zum Transfer, beschrieben unter "Bedingungen zur Verwendung der Software", die jeder Software beiliegen, müssen erfüllt werden.
- 3) Software deren Transfer nicht gestattet ist, muss vor Übergabe der Einheit gelöscht werden.

Komponenten und Entsorgung der Einheit

- Entsorgen Sie den IS1000C / IS950C, die Festplatte und die Batterie gemäß den örtlichen Vorschriften zur Abfallbeseitigung. Wenden Sie sich an ihre örtliche Verwaltung für Einzelheiten.
- Einige Teile in der Einheit, einschließlich Kühlventilator und eingebaute Batterie, müssen aufgrund der begrenzten Lebensdauer ausgetauscht werden. Zum richtigen Betrieb der Einheit wird daher empfohlen diese Teile periodisch zu ersetzen. Kontaktieren Sie Ihre Servicestelle für Ersatz und Gebrauchsdauer.

Teilebezeichnungen und Funktionen

Vorderseite



1) Hauptspannungsschalter:

Dieser Schalter wird normalerweise nicht verwendet. Die Stromversorgung läuft über den Hauptschalter am Drucker-Hauptbedienfeld, das zum Ein- und Ausschalten des Geräts verwendet wird.

Wichtig!:

- Benutzen Sie nicht den Hauptspannungsschalter, um den Betrieb zwangsweise zu beenden. Dies kann Funktionsstörungen im Kontrollgerät verursachen.

2) Fehleranzeige (orange):

Zeigt den Fehlerstatus des Kontrollgeräts an.

3) Bereitschaftsanzeige (grün):

Zeigt den Betriebsstatus des Kontrollgeräts an.

4) Datenanzeige (gelb):

Zeigt den Betriebsstatus des Kontrollgeräts an, wenn die Bereitschaftsanzeige leuchtet.

Rückseite

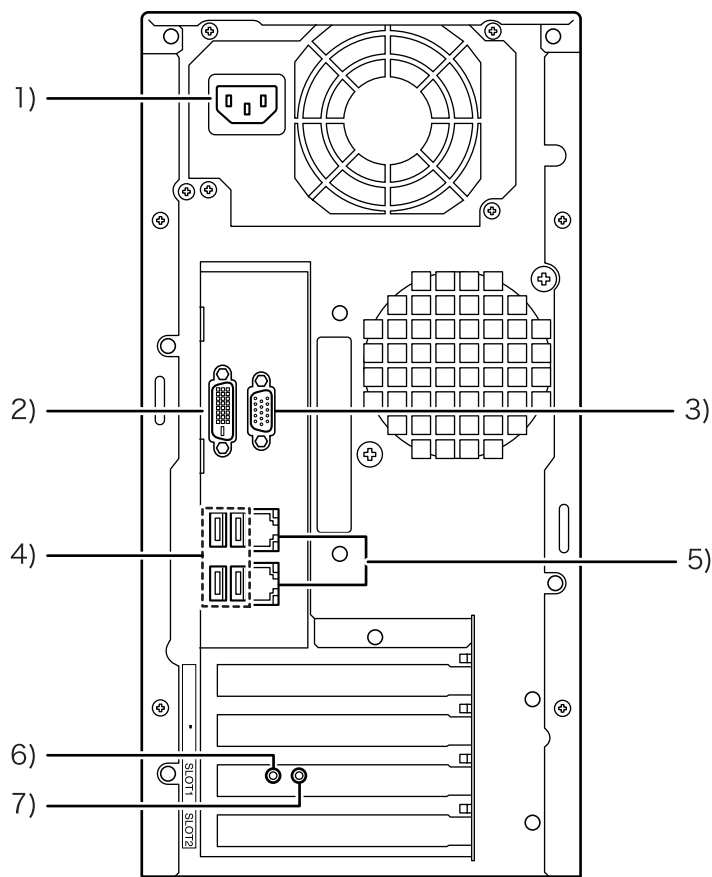
Auf der Rückseite befinden sich Anschlüsse zur Verbindung des ComColorExpress IS1000C / IS950C mit anderen Geräten und die zwei Knöpfe.

Wichtig!

- Vor dem Anschließen sind der IS1000C / IS950C sowie das anzuschließende Gerät auszuschalten. Wird der Anschluss bei eingeschalteter Spannung vorgenommen, kann eine Störung auftreten.
- Die zulässige Spannung für alle Ein-/Ausgangsanschlüsse beträgt 5V.

Hinweis:

- Ein Monitor (eine Auflösung von 1024 × 768 oder höher wird empfohlen), eine USB-Tastatur und eine USB-Maus können mit dem IS1000C / IS950C verbunden werden. (Gewisse Merkmale sind nicht vorhanden. Für weitere Einzelheiten sich auf die separate Anleitung "Utility-Handbuch" beziehen.)



- 1) **Spannungsversorgung**
- 2) **Monitor-Anschluss (DVI)**
- 3) **Monitor-Anschluss (VGA)**
- 4) **Anschlussstecker USB 2.0 (4-Kanal)**
- 5) **Steckanschluss für 1000BASE-T / 100BASE-T / 10BASE-T (2-Kanal)**
Oben: Für Drucker-Anschluss
Unten: Für Computer-Anschluss
- 6) **Testknopf**
- 7) **Rückstellknopf**

Testknopf

Nach dem Starten der Einheit, drücken Sie den Testknopf so lange, bis Sie einen Piepton während des untätigen Status der Einheit hören, der anzeigt, dass ein Testdruck durchgeführt wird.

Rückstellknopf

Bei Betätigung des Rückstellknopfes werden die Einstellungen zurückgesetzt.

- Führen Sie folgendes Verfahren durch, wenn Sie die Einstellungen des IS1000C / IS950C auf die Standard-Werkseinstellungen zurücksetzen möchten.
 - 1)** Nach dem Starten der Einheit, drücken Sie den Rückstellknopf so lange, bis Sie einen Piepton während des untätigen Status der Einheit hören.
 - 2)** Lassen Sie den Rückstellknopf innerhalb von 2 Sekunden los, nachdem Sie einen Piepton gehört haben. Sie hören einen weiteren Piepton und nach dem Neustart des IS1000C / IS950C sind die folgenden Einstellungen des IS1000C / IS950C auf die Standard-Werkseinstellungen zurückgesetzt.
 - Netzwerkeinstellungen
 - Administrator Passwort
- Kontaktieren Sie Ihre Servicestelle wenn Sie die Festplatte des IS1000C / IS950C initialisieren möchten.

Technische Daten

Grundspezifikationen	Modellname	ComColorExpress IS1000C: VB-XE34G ComColorExpress IS950C: VB-PG29G
	Anschließbarer Drucker	ComColor 9150 / 9110 / 7150 / 7110 / 3150 / 3110
	CPU	ComColorExpress IS1000C: Intel® Xeon® E3-1275 3.4GHz ComColorExpress IS950C: Intel® Pentium® G850 2.9GHz
	Speicherkapazität	ComColorExpress IS1000C: 8GB ComColorExpress IS950C: 2GB
	Festplatte	500GB (durch Benutzer verwendbar*1: ca. 460 GB) *1 Vom Benutzer verwendbarer Teil: Job-Empfangsteil, Hold, Archiv, Formular-Ablage, Schriftinstallationsteil
	Controller-Betriebssystem (OS)	Linux
	LAN I/F	1-Kanal (Ethernet 1000BASE-T, 100BASE-TX, 10BASE-T)
	Typ	Außeneinheit
	Stromversorgung	ComColorExpress IS1000C: 100-240V AC, 50/60Hz, 1.1A-0.5A ComColorExpress IS950C: 100-240V AC, 50/60Hz, 0.9A-0.4A
	Leistungsaufnahme	ComColorExpress IS1000C: Max. 110 W Betriebsbereit *2: 75 W oder weniger Bereitschaftsbetrieb: 4 W oder weniger ComColorExpress IS950C: Max. 85 W Betriebsbereit *2: 65 W oder weniger Bereitschaftsbetrieb: 4 W oder weniger *2 Kein Druckvorgang
	Abmessungen / Gewicht (B x T x H)	185 mm x 415 mm x 360 mm (ausschließlich vorstehender Teile) / ca. 10kg
	Sicherheit	Entspricht mit den Norm IEC60950-1, Für den Einsatz in Innenräumen, Grad der Verschmutzung 2* ³ , Höhenlage bis zu 2000m * ³ Grad der Umgebungsverschmutzung auf Grund von Schmutz und Staub in der Luft. Grad "2" entspricht einer normalen innenraumumgebung.
	PDL	PostScript®3 (CPSI 3019) * ⁴ PDF (1.7) PCL/PCL XL (PCL5c 1.38) TIFF (6.0) PPML * ⁴ Original-Adobe-Suchmaschine
	Verwendbare Protokolle	TCP/IP, HTTP, HTTPs (SSL), DHCP, FTP* ⁵ , NetBIOS* ⁶ , Apple Talk®, LPR, IPP, Port9100 (RAW-Anschlussstelle), IPv6, IPsec * ⁵ FTP: Hot-Folder-Funktion * ⁶ NetBIOS: Drucken-Funktion, Hot-Folder-Funktion
Installierte Schriften	PS: 139 Schriftarten (Type 1: 120, TrueType: 19) PCL: 80 Schriftarten	

Grundspezifikationen	Kompatibles Betriebssystem	Windows® Server 2003 (32-Bit / 64-Bit-Version) / Windows Server® 2003 R2 (32-Bit / 64-Bit-Version) / Windows Server® 2008 (32-Bit / 64-Bit-Version) / Windows Server® 2008 R2 (64-Bit-Version) / Windows® XP (32-Bit-Version) / Windows Vista® (32-Bit / 64-Bit-Version) / Windows® 7 (32-Bit / 64-Bit-Version) / Windows Server® 2012 (64-Bit-Version) / Windows Server® 2012 R2 (64-Bit-Version) / Windows® 8 (32-Bit / 64-Bit-Version) / Windows® 8.1 (32-Bit / 64-Bit-Version) / Windows® 10 (32-Bit / 64-Bit-Version) / Windows Server® 2016(64-bit-Version) Mac OS X v10.4 / v10.5 / v10.6 / v10.7 (Lion) OS X v10.8 (Mountain Lion) / v10.9 (Mavericks) / v10.10 (Yosemite) / v10.11 (El Capitan) macOS v10.12 (Sierra) / v10.13 (High Sierra) Linux (Nur mit PPD kompatibel)
----------------------	----------------------------	--



Please contact following for supplies and service: